

ISSUE: Winter 2024

Your magazine from Campbell Park Community Council

Homeground

WILLEN WINTERHILL OLDBROOK FISHERMEAD SPRINGFIELD NEWLANDS WOOLSTONE



New seated exercise class starts at Willen Pavilion

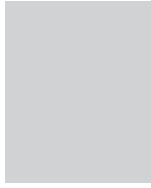
More info on page 8

MEET THE COUNCILLORS

WILLEN

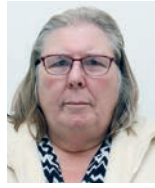


VAL DIXON
07799 864 644
val.dixon
@campbell-park.gov.uk



VACANCY

OLDBROOK



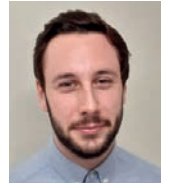
KATHERINE KENT
07821 696 895
katherine.kent
@campbell-park.gov.uk



CHRISPINA ODUNEWU
07446 132 620
chrispina.odunewu
@campbell-park.gov.uk



CHAIR OF COUNCIL
BRIAN GREENWOOD
07956 384 000
brian.greenwood
@campbell-park.gov.uk



KEITH JONES
keith.jones
@campbell-park.gov.uk

WOOLSTONE



JOHN HOWARD
john.howard
@campbell-park.gov.uk



DAVID PAFFORD
david.pafford
@campbell-park.gov.uk



TOM FRASER
07939 362 118
tom.fraser
@campbell-park.gov.uk



BRIAN BARTON
07779 261 364
brian.barton
@campbell-park.gov.uk



VICE CHAIR
RAY GOLDING
07540 283 157
ray.golding
@campbell-park.gov.uk

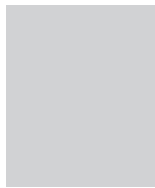
SPRINGFIELD



KARL KAVARANA
07702 026 414
karl.kavarana
@campbell-park.gov.uk



OPHELIA COLE
07447 499 285
ophelia.cole
@campbell-park.gov.uk



VACANCY

FISHERMEAD



TERRY BAINES
terry.baines
@campbell-park.gov.uk



PENNY HALTON-DAVIS
penelope.halton-davis
@campbell-park.gov.uk



DARRON KENDRICK
07513 997 702
darron.kendrick
@campbell-park.gov.uk

HOW TO CONTACT US

T: 01908 608559
E: admin@campbell-park.gov.uk
W: www.campbell-park.gov.uk

Council Office, 1 Pencarrow Place, Fishermead
Milton Keynes MK6 2AS



MARTIN PETCHEY
07712 485 255
martin.petchey
@campbell-park.gov.uk



ZAMZAM OSMAN
zamzam.osman
@campbell-park.gov.uk

COUNCIL OFFICE STAFF

CLERK TO COUNCIL
DOMINIC WARNER

DEPUTY CLERK
PERRI SULLIVAN

COMMUNITY OFFICER / COMMITTEE CLERK
TRACEY JONES

ESTATES MANAGER
CHRIS HINDSON

ESTATES OFFICER
SOPHIE GIBBENS

ESTATES OFFICER
P/TIME JOHN McCLINTON

RESPONSIBLE FINANCIAL OFFICER
P/TIME LISA BRADLEY

ADMIN ASSISTANT
TRACEY WAISTNEDGE

COMMUNITY HUB UPDATE

Campbell Park Community Council

Since the last edition of Homeground, we have completed the tender process for the construction work on the new Community Hub.

A council tender process is a formal and structured procedure through which local authorities procure goods, services, or, in this case, construction projects from external suppliers or contractors. The purpose of the tender is to ensure transparency, fairness and competitiveness in the selection of suppliers, as well as to obtain the best value for public funds. Below is a description of the steps involved in our tender process:

- **Identification of Need:** The process begins with the identification of a need within the council, such as the requirement for goods, services or construction projects.
- **Publicising the Tender:** The council advertises the tender to attract potential bidders. This is done through the government procurement portal.
- **Pre-qualification Questionnaire:** A document inviting interested parties to submit an expression of interest which is then formally evaluated.
- **Documentation of Requirements:** Council creates a detailed document known as the Invitation to Tender, outlining the project details, specifications, evaluation criteria, and any other relevant information. This document is then made available to potential contractors.
- **Submission of Tenders:** Interested parties submit their proposals in response to the tender document within a specified deadline. Tenders typically include details such as pricing, project timelines, relevant experience and any other information required by the council.
- **Tender Evaluation:** A tender evaluation group assesses the submitted tenders based on a predetermined criteria. This evaluation process aims to identify the proposal that offers the best value for money and meets the council's requirements.
- **Contract Award:** Once the evaluation is complete, a recommendation is made to council. The council awards the contract to the successful bidder. This decision is communicated to all participating suppliers and formal contracts are then drafted and signed.
- **Implementation and Monitoring:** After the contract is awarded, the council monitors the implementation of the project to ensure compliance with the agreed-upon terms and conditions of the contract.

The entire council tender process is governed by legal and ethical standards to ensure transparency, fairness and accountability in the use of public funds. It provides a structured framework for engaging with external suppliers and achieving the best outcomes for the council and the community it serves.

We are delighted to announce that, following completion of this detailed tender process, **Council have taken the decision to appoint Steele & Bray as the contractor for the construction of the new Community Hub.**

Steele & Bray are a general building contractor based in Northampton and were originally established in 1946. They have experience of a wide range of projects, including the successful completion of buildings for the public sector.

Residents will start to see activity on the site from the middle of February.

The contractors will be working hard to ensure that disruption to local residents is minimised, however, if you have any issues or concerns please let us know.



COUNCIL MEETINGS

Meetings held at the Oldbrook Centre

20th February, 7.30pm

19th March, 7.30pm

16th April, 7.30pm

21st May, 6.30pm – Annual General Meeting

21st May, 7.30pm

Committees

Meetings will be held at either the Oldbrook Centre or the Springfield Centre. Please see the website and noticeboards for more information.

Planning, Infrastructure & Transport

4th March, 6.30pm

2nd April, 6.30pm

8th May, 6.30pm

Finance, Administration & Policy

5th March, 7pm

Estates

13th February, 6.30pm

12th March, 6.30pm

9th April, 6.30pm

Community & Communications

27th February, 6:30pm

26th March, 6.30pm

23rd April, 6.30pm



COULD YOU USE LOCAL BUSES MORE OFTEN?

Milton Keynes City Council is using Government funding to provide residents with printed bus timetables as part of a campaign to encourage more people back onto buses and secure the future of services.

Councils have been provided with Government funding to improve public transport and the city council and bus operators are using this to share information with residents about local bus services, and to raise awareness of the benefits of 'getting back on the bus'.

Across the UK, fewer people have been using buses since the pandemic and in Milton Keynes overall bus use has dropped by around 15%. But the drop is even more significant - down by a third - for local people entitled to concessionary fares.

Milton Keynes City Council has used some of the ringfenced funding to print a travel guide including bus timetables following feedback from some residents that a printed timetable better suits their needs. This will be available in libraries as well as delivered to homes. The city council continues to publish timetables online as well as an interactive map of stops and an online journey planner at www.getaroundmk.org.uk/on-board/timetables.

The city council is also partially funding seven local bus routes for a period of time because providers will likely reduce or withdraw these routes unless passenger numbers increase.

THESE ARE:

Route 21: Linking Olney, Emberton, and other northern parts of Milton Keynes.

Route 41: Connecting Milton Keynes with neighbouring authorities via Olney.

Route 1: Serving Newport Pagnell, Green Park, Willen and Downs Barn.

Route 2: Connecting Newport Pagnell, Poets' Estate, Willen and Downs Barn.

Route 3: Covering Lovat Fields Village.

Route 4: Serving Greenleys, Great Holm, and Shenley Church End.

Route 7: Linking Oakridge Park and Great Linford

Around 7 million trips were made on Milton Keynes buses in the last year, and around half a million trips were made on MK Connect, where passengers book a shared trip on an accessible MK Connect vehicle. The city council set up the service in 2021 in response to bus providers withdrawing routes in some areas of the city, and it's the largest of its kind in the country.

"As a bus user I typically plan my journeys online, but I recognise not everyone will or can do the same. We're using this Government funding to provide printed timetables to make it easier for some passengers, and to remind local people what's available. Bus companies do withdraw unpopular routes, and those decisions are beyond our control. If you want a specific route to continue, the best signal you can send to the bus company is to get back on board."

- Cabinet Member for Climate Action and Sustainability,
Cllr Jennifer Wilson-Marklew



Be Extraordinary ...

become a local councillor

Would you
like to

Ordinary people
doing amazing
things

- **Make a difference to local people's lives?**
- **Give something back to your community?**
- **Help shape change for the benefit of your area?**

Local elections take place on **2 May 2024** – you could be a candidate

The last date for nominations is **4pm** on **5 April 2024**

Nominations are published by **4pm** on **8 April 2024**

To learn more contact:



01908 608559



admin@campbell-park.gov.uk

CPCC

Campbell Park Community Council

CHAPMANS EDUCATIONAL FOUNDATION

(Chapman's Charity – founded 1786)

Meeting of the Trustees held at the Ravenstone Village Hall, Ravenstone at 10.30am on Saturday 7th October 2023.

1. The Trustees elected a new Chairperson to the charity and John Howard was elected for one year. The Trustees also thanked the outgoing Chair Revd Canon Chrisa Pumfrey for how the Chair has dealt with the Trusts over the years.
2. The Trustees looked at the report from the Village Hall Management Committee and noted that there were some repairs needed to be carried out and improvements, the Trustees agreed to increase amount required to carry out the improvements to the hall and towards the cost of the rewire in the loft space.
3. The Trustees agreed to the amount under clause 16 the payments to both the churches at Ravenstone and Stoke Goldington for the promotion of religious instruction in Sunday schools the amount to £250 pounds each and the Woolstone church.
4. The applications for grants for under the Educational Foundation were looked at by the Trustees and all 20 grants were approved, the average being £500. It was also agreed by the Trustees that applications for the first time should be increased of the amounts to be paid out to £700. It was also agreed that encouragement would be given on past applications and the Trustees were pleased to see feedback as to how the grants had been used and how well they had done with their courses.
5. It was agreed that the next meeting of the Trustees of the charity would be at 10.30 am on Saturday 5th October 2024 at the Woolstone Community Centre, Woolstone.

David Pafford

- Trustee to the Chapman Educational Foundation



We were pleased to support Willen Hospice in January with their Christmas Tree recycling, by providing our wood chipper and members of our landscape team to chip the collected trees.

Willen Hospice and their volunteers managed to collect in excess of 1800 trees and raised over £30k excluding gift aid!

"We really couldn't manage this amazing result without all of you helping with your vans and support, it is truly an amazing moment to see the chippers all out working this morning working through the piles of trees that were collected"



Bees & butterflies love wildflowers.... can you help us grow more?

**Join us at our pop-up workshops to make
wildflower seed balls for you to plant & grow**

Workshops suitable for all ages
(children must be accompanied by an adult at all times)

Springfield Community Coffee Morning - Thurs 21st March at 10-11:30am
Children's Easter Tea Party, Springfield Centre - Sat 23rd March 2-4pm
Community Cafe Fishermead Trinity Centre - Friday 5th April 10:30am-12



CPCC
Campbell Park Community Council

ENJOY A WARM WELCOME.....

We are inviting people to and join us at a number of new community sessions throughout the Parish this winter.

With funding provided by MK City Council and Campbell Park Community Council, these sessions provide a variety of offerings including free exercise sessions, social activities all of which provide refreshments free of charge and in some cases a free or low cost hot meal too.

There will be some organised activity sessions, others which provide opportunities to meet people & socialise

and others will provide a quiet warm space to relax, read or work. But across all the sessions, you will be guaranteed to receive a warm welcome.

Some of these sessions will be run until the end of March and some will continue beyond this date.

More information about the sessions can be found on our website, on our social media (Campbell Park Parish Council News) and also on local noticeboards.

There are a variety of similar sessions being offered across Milton Keynes – please see: www.milton-keynes.gov.uk/benefits/warm-spaces-and-activities



enjoy a warm welcome



at the Trinity Centre
Fishermead Boulevard
Tuesdays
12 - 3.00pm

Come and enjoy a hot meal for £1 and free hot drinks in a warm, friendly space

Children must be accompanied by an adult

CPCC Campbell Park Community Council
This service is delivered in partnership with MGB Community Services



enjoy a warm welcome



at the Trinity Centre
Fishermead Boulevard
Wednesdays
4:30 - 6.30pm


Come and enjoy a FREE hot meal, hot drinks & a range of activities in a warm, friendly space

Children must be accompanied by an adult

CPCC Campbell Park Community Council
This service is delivered in partnership with Grace Church



enjoy a warm welcome



at the Trinity Centre
Fishermead Boulevard
Thursdays
10:30am - 12:30pm

Come and meet other residents & enjoy a hot drink.

A limited number of free cooked breakfasts will also be available
Join in with a range of activities, if you wish

Children must be accompanied by an adult

CPCC Campbell Park Community Council
This service is delivered in partnership with Action Speaks CIC



enjoy a warm welcome



at the Trinity Centre
Fishermead Boulevard
Fridays
10:30 - 3.00pm

Come and meet other residents & enjoy a hot drink.

Hot food options available at a low cost.
Join in with a range of activities, if you wish

Children must be accompanied by an adult.

CPCC Campbell Park Community Council
This service is delivered in partnership with Action Speaks CIC



Follow us on Facebook to see regular updates



enjoy a warm welcome



at The Cricketers
247 Oldbrook Boulevard
Monday - Friday
11:30am - 1pm

Come and enjoy a free hot drink in a warm, friendly space

Children must be accompanied by an adult

CPCC Campbell Park Community Council
This Warm Space is a community initiative kindly offered by the team at The Cricketers



enjoy a warm welcome



at Strudwick Cafe
@ MK Christian Centre, Strudwick Drive, Oldbrook
Mondays & Fridays
10am - 3pm
Starting 8th January until 22nd March 2024

Come and enjoy a bowl of soup & roll (free of charge)

Children must be accompanied by an adult

CPCC Campbell Park Community Council
This Warm Space is offered in partnership with MKCC For MK Project

for MK



enjoy a warm welcome




at the Springfield Centre
Community Coffee Morning
Every Thursday 10am - 1pm

Come and enjoy FREE refreshments & toasties at 12 noon
Join in with games & activities, if you wish

CPCC Campbell Park Community Council



enjoy a warm welcome



at the Willen Pavilion
Portland Drive
Every Tuesday 1:30-3:30

Come and enjoy a FREE session of Seated Aerobics 1:30 - 2:15
led by a qualified instructor
Participants are welcome to stay after the session to enjoy free refreshments

Starting on Tuesday 9th January
Just turn up - pre-booking not required

CPCC Campbell Park Community Council

AFTER OVER 20 YEARS OF SERVICE - ESTATES OFFICER, JOHN MCLINTON RETIRES.

John McLinton, who was awarded a long service award by Buckinghamshire & Milton Keynes Association of Local Councils in October last year in recognition of his outstanding work for Campbell Park Community Council, will be retiring at the end of March.

John has been an important part of the Community Council team for over 20 years and he will be missed!

John has been involved in many aspects of Community Council work including the management of allotments, sports grounds, play areas and community centres. He has been involved in numerous community events and been a key team member in bringing many projects to fruition.



Over his 20+ years' service, he has clocked up a huge number of miles travelling around our estates carrying out regular checks, reporting & following up issues including fly tipping, traveller encampments and addressing a wide variety of residents' concerns.

Enjoy your retirement, John!

MGB Community Services were pleased to welcome children from New Bradwell School to help at the community breakfast club.



The children helped to serve breakfast at the Trinity Centre, chatted to attendees and enjoyed some breakfast as well.

CPCC GRANTS

Campbell Park Community Council

If you're from a community group or charity, who is supporting local residents in the Campbell Park Parish, visit our website to discover more about our grant funding:

<https://www.campbell-park.gov.uk/services/grants/>

We recently awarded a grant of £540 to MK Melting Pot to enable them to deliver a series of lessons on how to create healthy and low costs meals using a slow cooker from the Trinity Centre in Fishermead.



MULTI-SENSORY WORSHIP for people living with dementia and their carers

First Thursday of each month - 11am

At Milton Keynes House of Prayer
Manor Farm Cottage, 2 Linford Lane, Woolstone
MK15 0AG

Led by Ian Pearce and Charmaine Howard
Free of charge. A warm welcome awaits you.

Contact: 07719968356 ipearce@live.com

HOW TO REPORT A STREET LIGHTING FAULT

You need to report this to Milton Keynes City council. The easiest way to do this is using the Report It link on their website;

<https://www.milton-keynes.gov.uk/pay-report-and-apply/report-it>

Alternatively you can phone them on:

01908 691691

Make sure you include the lamp column reference number and if possible, a postcode and house number closest to the faulty lamppost. This will help the engineers to locate the problem quickly.

For more information visit:

www.milton-keynes.gov.uk/faulty-or-damaged-street-lights



20mph Limit and 20mph Zone projects approved for Fishermead and Woolstone

We are pleased to learn that, following the work of local residents in gathering support to their petition for 20mph zones, the projects in both Fishermead and Woolstone, have been approved by MK City Council.

The next stage of the 20mph projects in Fishermead (2023/24) and Woolstone (2024/25) will be to carry out statutory consultation. This will give residents the opportunity to consider and comment on the detailed proposals which will include new signage, road markings and speed humps.



NEIGHBOURHOOD WATCH



WORKING IN WILLEN

For over 40 years, Neighbourhood Watch has been encouraging safer and stronger communities. For many of us, this is reflected in our own instincts to be good neighbours and look out for each other.

As individuals or families we value living in a safe and secure home and this is greatly helped by living in safe and secure environments and communities. To this aim, Neighbourhood Watch links with the Police and other authorities, helping bring a strong emphasis on crime awareness and crime prevention, as well as encouraging reporting to the Police our suspicions or concerns.

Our volunteers will be out and about in Willen with three simple messages:

1. Join Neighbourhood Watch at ourwatch.org.uk By doing this you will receive the all-important local Police Alert messages.
2. Once signed-up please also join your local Neighbourhood Watch scheme using the postcode search.
3. If that scheme is not near you, please apply to start your own scheme.



For information on Neighbourhood Watch in Willen, email enquiries@mknhwa.org.uk Look out for our future work in Fishermead, coming soon.



The Milton Keynes Neighbourhood Watch Association would like to thank the Campbell Park Community Council for their funding support for this initiative.



CRIME PREVENTION ANTISOCIAL BEHAVIOUR

RECOGNISING ANTISOCIAL BEHAVIOUR (ASB), what it is and what it isn't, can be difficult. What constitutes ASB is extremely subjective. What you may consider to be ASB another person may not. ASB is a range of behaviours that can cause nuisance, annoyance, harm, or distress to a person in their home, neighbourhood, or community. It includes a wide range of unacceptable activities such as:

- Noise nuisance: including loud music, banging, DIY at unsocial hours, or loud parties
- Household disputes: including shouting, swearing and fighting
- Harassment and intimidation: including threats, violence or abusive behaviour aimed at causing distress to certain people eg the elderly
- Environmental ASB: including dumping rubbish, animal nuisance (such as dog fouling and dogs barking), vandalism, property damage and more.

There is a fine line between ASB and neighbour disputes, which can often begin over relatively minor inconveniences, such as parking.

RECORDING ASB is important to keep record of incidents, as this will be of great help in investigating the behaviour and tackling it. It can also help you to get some perspective on how often it happens. If you decide to take formal action at some stage, it can help others to see an established pattern of nuisance over time.

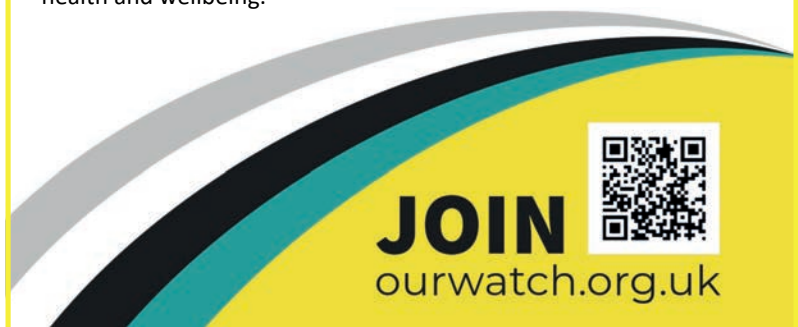
Download and use our ASB diary from ourwatch.org.uk/asb to record events over a period of 14 continuous days. You can ask someone else (a neighbour or visitor) who witnesses the nuisance to sign the entry in the 'names & addresses of any witnesses' column.

Return your completed diary to the ASB team at Milton Keynes City Council if you live in private accommodation. If you live in council or housing association property, return it to your housing officer.

REPORTING ASB as it can ruin lives and devastate communities. Reporting antisocial behaviour early on is important to prevent it from escalating.

MKCC, social housing landlords and the police all have powers to deal with ASB.

It is important that on reporting ASB to MKCC, the police or your housing provider that you detail the impact it is having on your health and wellbeing.



LANDSCAPE REPORT

HAVE YOU NOTICED THE WEATHER CHANGE RECENTLY?

The planning of landscaping works is based on a summer and winter schedule. The work is carried out following the seasons and taking nature's pattern into account.

WINTER WORK

The winter work is generally carried out from October – March. There is a legal obligation to not disturb nesting birds during the summer months (unless a health and safety issue) and leaving the shrubs to grow through their natural cycle means that insects and birds can benefit from the food they produce ready for the winter months, heavy cutting back of shrubs during winter months also means they are less susceptible to disease.

SUMMER WORK

The summer work is carried out between April-September. This is when the temperatures begin to



rise and everything begins to grow. During the summer months we move onto grass cutting, strimming, weed control and light maintenance work where needed.

Due to climate change we are seeing significant changes to our weather patterns.

In 2022 we experienced a drought during the summer, meaning we stopped mowing as early as June and were able to make a start on other works. Combined with a dry cold winter we were able to keep up with the maintenance programme and we had very little growth keeping everything looking neater for longer.

This past summer/autumn has seen a complete contrast. The persistent rain and high temperatures saw above average growth. This meant that we had to mow into November, temporarily leaving a reduced crew on the winter work (if it wasn't for the wet weather we could still be

mowing now!). Restricted access with the vehicles means we have had to pull off certain jobs or use hand tools instead of the tractor which slows the work down. The prewinter work carried out in September/October, which would normally lay dormant until spring, has already regrown in many areas which creates a higher volume of work (and looks a little less smart) and everything still continues to grow.

This means that compared to previous years the shrubbery may look a little "unkempt" but we are working hard to complete all winter works before the start of the summer season.

There have been, and may continue to be, some delays in response time to enquires as we have received a higher number compared to last year but everything that comes through is put into the winter schedule. We thank you for your patience whilst we work through these challenging seasons.

LANDSCAPE CONSULTATION

We had a large number of responses back from the landscape section of the CPCC annual consultation. We have sought through the data to pinpoint areas that the residents feel need further attention.

While many areas highlighted are now part of a regular maintenance programme and will continue to be cut back once a year, there were areas that needed further and escalated action.

In previous years, some areas had not received a yearly cut back. One of those areas being the courtyards in Springfield. Residents received letters during the summer ahead of the regeneration coppice, where we are bringing the hedges back to waist height to improve the quality of the



shrubs and meaning we can maintain them yearly at a manageable height. There were also examples where the regular maintenance was insufficient for example Butterfield close in Woolstone where the yearly cut back of the laurels still caused sightline issues and obstruction for the residents. These have now been reduced to waist height and a much clearer line of sight.

We also had some enquires about Trees but these are the responsibility of MKCC, who have dedicated tree inspectors to assess any concerns you may have and concerns would be best directed to their landscape officers.



We are responsible for a two-meter crown lift over footpaths and a three-metre crown lift over carriageways and this is incorporated into our maintenance programme.

We will continue to listen to feedback and take on board any concerns or suggestions that residents may have on the landscaping in your area.

GEOFF TAYLOR EDUCATIONAL TRUST

(Geoff Taylor Charity-founded 1994)

The Trustees had their AGM on the 27 September 2023 and have re-elected Karl Kavarana as the Chairman and Val Dixon as Vice Chair.

All existing trustees were elected. The grants this year were also dealt with at the same time. The grant applications for this year were 10 in number and eight were approved in total.

With the number of applications, it was approved that the grants to be given out were for £500 as a maximum. Some of the applicants have had grants over the last few years towards their studies.

Grants given out were across the parish of Campbell Park. The trustees had some feedback from previous applications and how the grants had helped towards their studies and thanking the trustees.

The total amount for grant applications this year to be given out by the trust was for £4000.

The Trustees noted that without the grant from the parish council that the next round of grants will be possible and that the amount to be given may have to scaled back so that to enable all applicants to receive a grant.

David Pafford

- Trustee to the Geoff Taylor Educational Trust

PIONEER TALES REVISITED - A LIVING ARCHIVE MK EXHIBITION

There is still time to visit the exhibition which is running until 24th February 2024 at The Event Space, MK Central Library. This exhibition features the stories of 16 individuals who have been pioneers in their own communities or professional lives in Milton Keynes, including one of our Councillors, Ophelia Cole.



Hello from everyone at Shepherdswell Academy

We have had such an exciting and wonderful Autumn term here at Shepherdswell Academy.

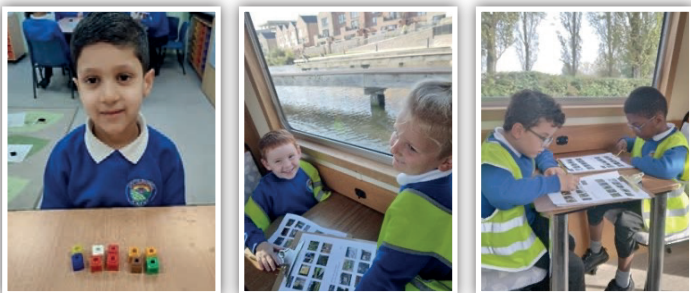
We celebrating opening our new Nursery, Otters in October. The children settled into the school setting quickly. They have been learning all about colours, numbers and love singing songs especially 'The wheels on the bus' and 'Twinkle, Twinkle Little star'.



In EYFS, Hedgehog class have settled into school life well and have created excellent friendship groups. They have been learning all about people who help us and have had visits from Tracy our local PCSO, the fire engine visited, a nurse and a hairdresser. The children love exploring the outdoor learning environment.



In Year 1 the children have been learning all about addition and subtraction in maths and have been using manipulatives and written methods to help them find the correct answer. In English they have explored the story of 'Knuffle Bunny' which a story about a lost toy. The children thought about their favourite toy and the feelings this would give them. They have also been learning about toys in history comparing old and new toys. We got to walk to Campbell Wharf and go on an electric canal boat to explore our local area for Geography.



In Year 2 they have been investigating measures in maths, they wanted to find out if the oldest person would be the tallest.

In English, the children learnt all about non-chronological reports and have written their own about different countries around the world, using headings, subheadings, text boxes and diagrams.



Spaces Available for
January




Contact the school office on
01908 735865

If you have a child starting school in September 2024 and would like to find out more about us or organise a tour, please contact the school office on 01908 665418 or office@shepherdswell.emat.uk

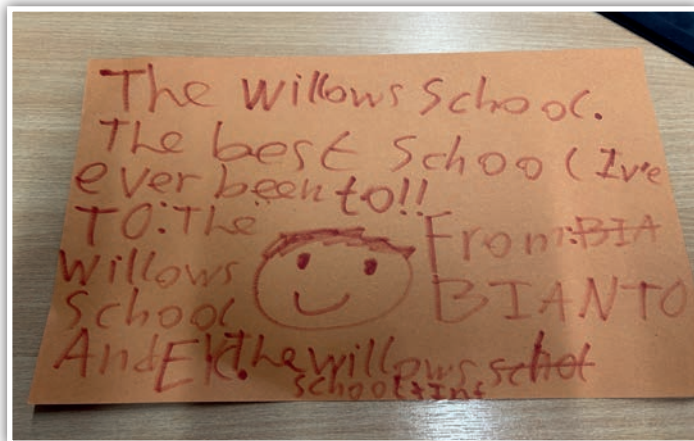


The Willows School and Early Years Centre Winter News

This term has been very exciting across the school. We welcomed new children and staff across the school who seemed to all settle in and enjoy life here very quickly.

The term started with us being able to share with our families that our OFSTED in July had showed that we continue to be a good school. The inspector wrote:

Pupils are happy at this inclusive school. They trust that adults in the school will help them be the best they can be. Pupils meet the high expectations that adults have for them in both their learning and their conduct around the school. As a result, a sense of calm pervades every classroom. Pupils are considerate towards each other and are inclusive when they talk about the ways in which people are different. Pupils learn about healthy relationships and how to keep themselves safe. They know who their trusted adults are who they can talk to if they have any worries.



We then held a water fun afternoon in the unseasonal September weather as the children across school finish their introductory topics based on Dale Chihuly and Andy Goldsworthy.

In the EYFS the learnt their routines and soon knew what they were doing and when they started the term by studying the topic "Tell us a story" where they explored, retold, draw and wrote about different traditional tales and then moved onto Jurassic park where they built a dinosaur park in the classroom which had many visitors every day. Finally, they moved into learning about Christmas and enjoyed performing their Wriggly Nativity.

In KSI the children soon settled in with their new teachers and also started the year by studying "Happily after ever" which continued the learning about traditional tales. They moved into Paddington's passport and created some

amazing leaflets about Fishermead so that if Paddington came to visit he would know his way around. The children compared Peru to the UK and could see the positives in living in both countries. The children's final learning was based on the Children's champion, Thomas Barnardo. This topic really made children think about how life has changed for some and what they perceive as being fair and unfair for children both long ago and today. Their Christingle performance was brilliant!

We have raised awareness and money for charities this year. We held our annual silence for Remembrance day and the children dressed up and raised money for children in need, which linked to the children's classroom learning.



Our clubs this term have been a hit with lots of children. We have had dance, boxercise, craft club and even a "sleepover" during our wrap around club.



The school council have been proudly wearing their new tabards and helping with the weekly tuck shop, setting up fundraising events and listening to the other children's ideas as well as being excellent role models.

If you would like to visit our school as a prospective parent, we cater for children from the 2-7 years old and we have a wrap-around offer which means that our day runs from 8am until 6pm.

Please contact the office on 01908 528803 or office@thewillowseyc.org.uk

Children's Christmas Party

Thank you to all the families that attended our Children's Christmas Party. We were very pleased to see so many people come along and enjoy the afternoon with us. We had fun with crafts, games and face painting, Christmas music and also ate lots of lovely food! We even had a visit from Father Christmas with the children able to visit our grotto meet him and receive gifts.





Pre-School

Buttons @ Springfield

Springfield Community Centre, 45 Springfield Boulevard, MK6 3JH

Coming soon- April 2024!

15 and 30 hours funded sessions. Spaces for children from aged 18 months, private sessions also available.

Additional settings across Milton Keynes, Buckinghamshire and Northamptonshire, flexible hours including breakfast club, afterschool club and holiday care.

Contact us for details of your nearest pre-school.

Tel: 01908 533404 / 07973 158368

Email: enquiries@buttonspreschools.co.uk

www.buttonspreschools.co.uk



FREE ACTIVITY PACKS FOR CHILDREN

We will have activity packs available for the FEBRUARY HALF TERM HOLIDAY available from Tuesday 13th February.

We will also have Activity Packs available for the EASTER HOLIDAY. These will be available for collection from Tuesday 19th March.

The packs will contain a variety of paper based activities and colouring sheets. To ensure as many families as possible can benefit from this, please only take one pack per child. The packs will be limited in number and only available while stock lasts. We would also love to see any photos of the children enjoying the packs or the completed activities that we can share. Most of all – we hope that the children enjoy them.

The activity packs can be collected from the Council Office in Fishermead: **CPCC, 1 Pencarrow Place (behind the Trinity Centre) MK6 2AS** – Monday to Friday 10am – 4pm. If you have any queries, please contact admin@campbell-park.gov.uk or 01908 608559



GIVING CARERS THE BREAK THEY DESERVE



Mytime comes to Milton Keynes!

In the 2021 census 20,604 people in MK identified themselves as a carer, with 10,419 people providing 20 or more hours of care per week. If you were to include those who do not recognise themselves as a carer, this number would be significantly higher. (*CarersMK)

Who is a carer?

A carer is anyone who cares, unpaid, for a friend or family member who due to illness, disability, a mental health problem or an addiction, cannot cope without their support.

Carers hold families together, they enable their loved ones to lead fulfilling lives, often making huge sacrifices along the way; their contribution to society is immeasurable. Carers are stretched to the limit with competing demands of their time and energy.

Mytime is deliciously simple. It connects unpaid adult carers who could benefit from a break from their demanding caring roles, with businesses and organisations offering complimentary leisure, cultural and educational activities from overnight stays, tea and cake, guided tours, eating out, day trips and more!

The Mytime project has launched in Milton Keynes, and we are seeking businesses and organisations that are willing to provide opportunities for carers, allowing them to have a much-needed break.

If you want to know more about Mytime in Milton Keynes, either how to make a referral or you or someone you know could offer a break/activity; the team would love to hear from you.

Contact: mytime@localsolutions.org.uk

mytime4carers.co.uk



Are you, or somebody close to you living with Dementia?

The Milton Keynes Dementia Information and Support Service provides one-to-one support for people living with dementia, people with memory concerns and their carer's.



We deliver support, practical advice, information and guidance tailored to you and your needs - by phone, email or face to face visits.

01908 669404/232612
MiltonKeynes@Alzheimers.org.uk



Kid's Corner



Hello Children,

I hope you all had a good Winter Holiday, and you have a new exciting year to look forward to.

All sorts of new things are happening in Kid's Corner this year. Look out for the return of "Sunshine in Your Street"; I might be able to come into your school and plant sunflower seeds again. We did this a few years ago but sadly we had to stop because of Covid.

Also, Sandy our cat who we have been following his growth over the last year, is almost 1 years old.

Do any of you know of a new puppy that we could watch over the next 12 months to see its progress? Like we did with Shandy the kitten.

First is Pets Club.... Shandy is now 9 months old and is growing into a fine young cat.



If you have any pet photos or a story about a pet, why not send it in to Pets Club to share with everyone?

Nature Watch: The National Bird Watch is at the end of January, so I thought it would be good for Kid's Corner to do a Wildlife Watch for the next edition.

I will let you know what you have to do in the next magazine, and then we could record this in the National Animal Watch, just like we do with Bird Watch.

So, all the usual things to remember:

Stranger Danger. Green Tick Code.

Water Beware:



Remember to keep safe in the cold weather.

Do not walk on the ice if the canal freezes over. As you know it has been really cold, so you must remember to keep warm. Do lots of star jumps in the playground and skipping.

Send in a Poem:

If you send in a poem and it goes into the next Homeground you will win a prize.

Word Search



1. Sorry
2. Frosty
3. Cold
4. Winter
5. Icy
6. Gloves
7. Scarves
8. Hats
9. Puddles
10. Mittens
11. Boots
12. Dark

Jokes:

Do you have any jokes? If so, send them in and you could also win a prize if we put them into the magazine.



Artwork completed together at our Christmas Party by Helena (Age 6) and Elena (Age 5).



P.S: If you send anything into Kid's Corner we need to know your name, address, your age, and what school you go to, or we cannot send you your prize.

The address is:

1 Pencarrow Place, Fishermead, Milton Keynes, MK6 2AS.

Until next time. Have fun!!!!

Cllr Penny.

Hop on over for our

EASTER

tea party

Join us on

Saturday 23rd March, 2-4pm

Springfield Centre, Springfield Boulevard MK6 3JH
for some egg-citing fun!



This is a free event. Children must be accompanied by a parent/carer at all times.

CPCC
Campbell Park Community Council