

ISSUE: SUMMER 2020

The magazine from Campbell Park Parish Council

Homeground

WILLEN WINTERHILL OLDBROOK FISHERMEAD SPRINGFIELD NEWLANDS WOOLSTONE

Lockdown in the Parish

Landscape Update

New Ways of Working

Campbell Park Parish Council

MK Melting Pot

doing what they do best

page 13

follow us on



www.campbell-park.gov.uk



CAMPBELL
PARK
PARISH
COUNCIL

Caring within the community

MEET THE COUNCILLORS

WILLEN



**CHRISPINA
ODUNEWU**
07459 889199



**VAL
DIXON**
07596 264040

OLDBROOK



**KATHERINE
KENT**
01908 331935



**TOM
FRASER**
01908 607033



**VICE CHAIR
BRIAN GREENWOOD**
07956 384000



**LARRY
HARRIS**
01908 675766

WOOLSTONE



**VACANT
SEAT**



**DAVID
PAFFORD**
01908 608559



**TUBO
URANTA**
01908 982626



**ELAINE
DICERBO**
07885 518252



**RAY
GOLDING**
07540 283157

SPRINGFIELD



**ADAN
KAHIN**
01908 608559



**KARL
KAVARANA**
07702 026414



**NANA
OGUNTOLA**
07737 750394

FISHERMEAD



**CHAIR OF COUNCIL
TERRY BAINES**
07846 697237



**PENELOPE
HALTON-DAVIS**
01908 696034



**DARRON
KENDRICK**
01908 669067



**MARTIN
PETCHEY**
07712 485255



**VACANT
SEAT**

Parish OFFICE STAFF

CLERK TO COUNCIL
DOMINIC WARNER

ADMINISTRATION OFFICER P/T
ELAINE WEBB

COMMUNITY OFFICER / COMMITTEE CLERK
P/TIME **TRACEY JONES**

ENVIRONMENT OFFICER
JOHN McLINTON

RESPONSIBLE FINANCIAL OFFICER
P/TIME **LISA BRADLEY**

ADMIN ASSISTANT
TRACEY WAISTNEDGE

LANDSCAPE MANAGER
DANIEL MOTT

ADVICE WORKER
PRISCILLA HOGAN

HOW TO CONTACT US

T: 01908 608559

E: admin@campbell-park.gov.uk

W: www.campbell-park.gov.uk

The Parish Office has now been closed but will still be "open" for phone calls and emails and our staff will continue to work remotely. Whilst there will be some things that may take longer, we will endeavour to ensure that we continue to respond where we can and continue to support our community whilst maintaining the "social distancing" that has been encouraged. Our Advice Service can still be accessed via email and phone.

MEETINGS

All meetings to be held remotely, members of the public can access and participate at the meetings through the use of Microsoft Teams – see Parish Council website www.campbell-park.gov.uk/ for details.

A live stream of the proceedings will be available at the following link: <https://www.youtube.com/channel/UCOSIXXjdlEzu2sxQODiNCQ>

Planning, Infrastructure & Transport Committee
Monday 3rd August 2020, 6.30pm
Monday 7th September 2020, 6.30pm

Buildings & Property Portfolio Committee
Tuesday 8th September 2020, 6.30pm

Community & Social Wellbeing Committee
Monday 21st September 2020, 7.00pm

Communications Committee
Tuesday 22nd September 2020, 6.30pm

Council
Tuesday 15th September 2020, 7.30pm

New Ways of working and supporting our Residents

Campbell Park Parish Council

From a news story about a virus in a distant country, to a global pandemic that would pervade every aspect of our daily lives, few could have imagined as we strode into the new decade exactly what lay ahead of us, and that included the Parish Council.

By their nature, Parish Councils are known for their measured approach, with consultation and democratic decision making regulating the pace of progress, with the sometimes-sluggish outcomes being a frustration to those involved. But all of that needed to change with the arrival of Covid-19, with the Parish Council having to quickly find new ways of working to support residents facing challenges, the like of which they had never met previously.

The Start of Lockdown

Having already adopted social distancing, closed our Community Centres and delegated emergency powers to the Clerk to Council, the Prime Minister's announcement that the Nation was going into lockdown triggered a chain of events that saw the Parish Council enter uncharted waters. A late-night dash to the Parish Office followed, with staff gathering up all that they thought they might need to work from home in the weeks ahead, and it was a genuine expectation that it would be weeks rather than the months it turned out to be.

The First Actions

With Council meetings suspended, the delegated powers were quickly used, with the first action being a donation of £5,000 to the Milton Keynes Emergency Response Appeal. The Appeal, which is being coordinated by MK Community Foundation, has granted over £400,000 to more than 80 community groups supporting residents across Milton Keynes. The huge diversity of the groups receiving grants meant that there was every opportunity to try and assist our residents that needed help the most. One of the groups to

receive a grant were MK Melting Pot, who had previously worked with the Parish Council, with our Community Centre in Springfield then becoming their base to cook weekly hot meals for low income families.

Recognising the impact that the Pandemic was having on older residents, Council then decided to award a further £1,000 to support the work of Age UK, with Parishioners again benefitting from local initiatives.

The national media was soon filled with stories of how residents and groups were coming together to support each other through the emergency and Parishioners again came to the fore.

Helping Hands

Working within the limitations of lockdown and social distancing, networks sprang up on a street by street basis, with residents (some of whom who had not previously spoken) coming together to support one another. Although the pandemic has brought sadness to all corners of society, we hope that the many acts of selfless neighbourliness will be an enduring force for good as we emerge to the "new normal." Councillors and Officers also sprang into action to assist with the local effort. Tasks involved delivering emergency food parcels, shifts at the foodbank, delivering prescriptions and grocery shopping. One of our Councillors was shopping for 7 extra homes, and although they have a self-confessed love of retail therapy, found the situation to be somewhat challenging, although ultimately rewarding. A good deal of time was also spent trying to keep residents safe, engaging with those that wanted to carry on with life as normal, with our parks and play areas being a focus of this work. The Council is proud of the way that most Parishioners adhered to the sudden restrictions of everyday life, knowing that doing so would be the best way of keeping each other safe.

Landscape Service

During all this drama, the date came for the launch of our Parish Council landscape service, delivering a devolved arrangement on behalf of Milton Keynes

Council, and of course the timing could not have been worse. The landscape team showed great fortitude as they went out on to near-deserted streets to start addressing the mammoth task of improving the local environment. It is a truly enormous task, but one that we are determined to deliver on. Daily we are still learning about different aspects of the service, at the same time we are doing our best to meet understandable resident expectation. We are asking for your patience as there is a lot more to be gained from the delivery of an overall strategic plan than by carrying out individual jobs randomly across the Parish. We are logging the issues that you are highlighting and will get round to them – although it turns out that a number of them do not relate to the area that we maintain, so please visit our website and use the landscape mapping tool to view the areas that we are responsible for.

Thankfully, emergency legislation was rushed through to allow the Parish Council sector to work within the restrictions of lockdown, the most notable of which was to allow us to meet remotely using electronic platforms. Working with our IT provider, we brought forward existing plans for the modernisation of our system, with the outcome being our first online meeting in May facilitated by Microsoft Teams. This development was reflective of wider society, with people embracing technology to stay in touch and get things done.

Lastly, a plea to you all to let us know what you would like the Parish Council to concentrate its resources on. This year is showing us that there may need to be a fundamental rethink of where our future priorities lie.

Many of you have already responded to our annual Budget/Precept consultation, indicating the services that you value most and the level you think our income should be set at, but we need more responses to ensure that the consultation is as representative as possible – please complete the consultation and return it to us in the pre-paid envelope as soon as possible.

Implementation of verge and pavement ban for Newport Road, Woolstone

In April 2019, Milton Keynes Council received a request from Cllr Peter McDonald to implement a verge and pavement parking ban in Newport Road, Woolstone, from the junction of Marshalls Lane to the turning circle adjacent to The Old Rectory at No 56 Newport Road.



The intention of the prohibition of a verge and pavement parking scheme is to prevent ad hoc parking and protect the environment for the residents of Newport Road, making the environment safer and more pleasant by managing the number of vehicles parking there.

During July and August 2019 Milton Keynes Council ran an informal consultation with the residents living in Newport Road, on introducing a Verge and Pavement Parking ban to parts of Newport Road. 100% of residents who responded were unanimously in favour of the implementation of the ban and Milton Keynes Council proceeded with the implementation of the ban in April 2020.



Woolstone Community Centre

To hire the Woolstone community centre for parties why not book this outstanding venue for your next event.

This community Centre/Church can accommodate functions ranging from birthday and anniversary parties to wedding receptions and evening functions. Can also take bookings for the hire of the hall for user groups for week days & Saturdays

The perfect setting for your event photos Facilities include. Seating for approximately 70. Car park, fully equipped kitchen, free Wi-Fi, beautiful maple floor, disabled access and toilet with wheelchair access.

E-mail
woolstonecommunitycentre@outlook.com

Call
07840-924532



Have you lost your job? Do you need support?

Our FREE advice service and online workshops are open to everyone.

How we can help

- One-to-One Advice on the phone or online
- CV Advice
- Training & Development Information
- Career Change Guidance
- Job Searching Advice
- Interview Preparation Advice
- Computer Skills Development Training

Register now for our FREE online workshops

- Confidence to Work
- Stress Management
- Interpersonal Skills

Direct referrals to our partners at Citizens Advice

- Employment and Redundancy Advice
- Financial Concerns Related to Debt and Money Management
- Universal Credit Set Up and Benefit Entitlements

Get in touch today to register

Phone: 07852 965134 (Kelly) or 07852 963744 (Tracy)

Email: info@worksforus.org.uk

Website: worksforus.org.uk

Proudly supported by: COMMUNITY FUND

In Partnership with:



CAMPBELL PARK ADVICE SERVICE

FREE SERVICE

Are you struggling with money?
Do you need a listening ear?
Speak to our Advisors in confidence

C
P
P
C



SOME OF THE ISSUES WE CAN ASSIST WITH ARE

- Any housing matters related to rent arrears and or Discretionary Housing Payment
- Benefits (advice or form filling)
 - Rent or Council Tax arrears
 - Family or domestic difficulties
- Any other concerns you would like to discuss



Summer Treasure Hunt 2020

**2 Amazon Fire HD 10" Tablets &
4 Junior Art Sets to be Won!**

During the school summer holiday starting on 20th July our 6 new friends will be hiding around the Parish for you and your children to find! Find at least 3 of our friends and enter our prize draw to win some wonderful treasure!



The clues to help you find where they are hiding will be posted on our Facebook Page – *Campbell Park Parish Council News*. On the days that our friends are hiding they will only be in their hiding place for a few hours each day – so you'll need to be quick!

To enter the draw to be in with a chance of winning some treasure, an adult will need to email us admin@campbell-park.gov.uk by Friday 4th September 2020 telling us which friends you have found (a minimum of 3 different friends is needed) and sending us photos* of your child/ren with those friends. All email entries must include your child's name, address and age with 'Treasure Hunt' in the subject line.

The Treasure Hunt is aimed at children participating with their families but is open to everyone. However, we will only accept 1 prize draw entry per household.

***The full details of the Treasure Hunt (including Terms and Conditions) can be found on our Facebook Page- *Campbell Park Parish Council News* and on our website www.campbell-park.gov.uk**

Landscaping Update

Campbell Park Parish Council



It has been 4 months since the Parish Council took over the delivery of the landscape service from Milton Keynes Council. We hope you are beginning to see a gradual improvement to the landscaping where you live.

The decision to take over the service was not taken lightly with the final decision only being made after listening to resident's views and their overwhelming support to take on the service.

When we commenced the delivery of the service in April, we were immediately on the back foot, with little or no winter maintenance or spring grass cutting having been carried out under the previous arrangement. This, following years of year on year decrease in the maintenance of the landscaping throughout the Parish, means that putting things right will take time. Our plans are to improve the landscaping at a faster rate than which it fell into decline, we simply cannot address all issues

at the same time and need to be guided by our long term plan. Unfortunately, like many services, Covid-19 has had an impact on our initial plans for delivering the service and we, like everyone else, have had to comply with Government guidelines. Keeping our staff and residents safe has been our number one priority.

Our initial maintenance schedule for shrubs, hedges and undergrowth has slipped due to social distancing and the 2 metre rule but we have maintained our 3 weekly schedule of grass cutting throughout the Parish and we are pleased to say that we have had a number of complimentary comments on the work done so far.



With the lifting of some restrictions in June, we started to implement our maintenance schedule for shrubs, hedges, undergrowth and sightlines which is certainly making a noticeable difference whilst continuing the grass cutting schedule.

The consultation on the 2021/22 Budget/Precept has been delivered to all properties within the Parish. We have included a question on landscaping, asking residents to prioritise two types of landscaping they believe would make a positive impact on the area where they live and asking for the location of an area



that they feel needs particular attention. If you have not already done so, we would urge you to complete this section and return your completed form in the pre-paid envelope provided. The information you give will assist us in updating our landscaping schedules and in the short term to look and hopefully tackle those areas that you identified as being of most concern to you.

We must point out that not all green areas, shrubs etc are part of the contract that we have taken over. Some areas are still maintained by Milton Keynes Council and The Parks Trust.



If you would like to check an area that you are concerned about, please go to our website at

<https://www.campbell-park.gov.uk/>

and check out our **Landscape page.**

Use the link to check if the area is part of the Campbell Park Parish Council landscaping contract, enter the postcode, select your address and then click on Find. Click on the My Maps tab and then under Map Categories (on the left of the map) tick Landscape – Maintained General



We want to hear your views;

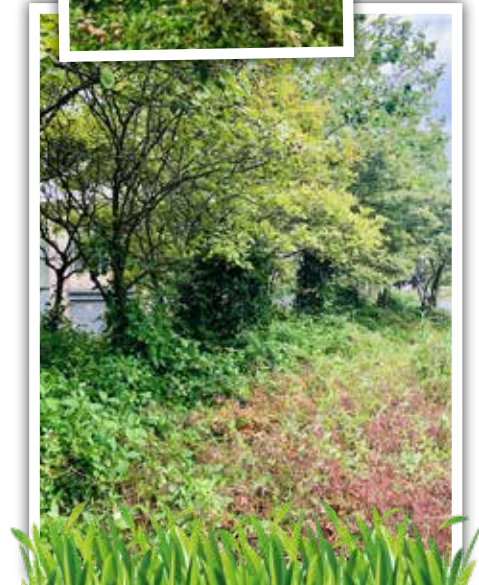
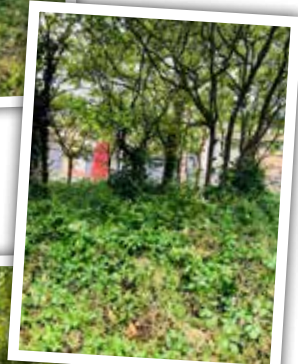
to report comments/queries/complaints about the Parish Council landscaping service, use the online form on the website.

In this first year we hope you continue to see improvements to the landscaping in your area. Looking ahead we are in the process of compiling a maintenance plan to ensure that the work we do on the landscape of the Parish is effective and sustainable.

The maintenance plan will look to encompass

- Grass cutting scheduling
- Essential sightline maintenance
- Winter maintenance programme

We are trying to prioritise all the work we undertake. In addition, we are trying to address issues raised by residents but we ask for patience so we can plan in work so we can continue to move the landscape of the Parish forward.



Communications Committee

Campbell Park Parish Council

This year the Communications Committee managed to accomplish a number of things prior to the lock down.

We were able to launch our social media presence with our Facebook, Twitter and Instagram accounts where we keep our parishioners updated on our activities on a daily basis.

We would love all our parishioners to like and follow us on social media and interact with us online. Let us know how we can continue to support you better.

We also successfully worked with Fiona Storey to change our entire website and make it more accessible but also enable us to provide you our Parishioners with more information about what we are doing for you.

We were very excited to take ownership of an entire virtual reality kit which contains, VR goggles, cameras and a tablet. The kit is Google certified with information about almost anything in the world. The plans we had were to create

VR experiences with young people and other communities as a way of engaging with our parishioners. Due to the COVID 19 lock down this has not happened. We are looking forward to when schools and community centres re-open in order to provide an opportunity for our Parishioners to enjoy and learn within the world of virtual reality.

We managed to approve the migration of our Microsoft programmes to Microsoft 365 which enabled us to be ready to hold virtual meetings of Council and Committees during the lock down. The migration has been a learning curve for Council but one we have managed to navigate well and though there are still very minor glitches we are certainly operating effectively in this new virtual arena.

We did not manage to send out physical copies of our Homeground magazine in February due to the lock down but we are pleased to be able to get this issue delivered to you.

We will continue to update our communications both on our social media and our website and in the meantime stay safe.



Are you going to University or College or taking up an apprenticeship?

If you live in certain parts of central/eastern Milton Keynes you may be eligible for a grant from Chapman's Educational Foundation towards your costs.

To check eligibility or get an application form, send your name and postal address to helenhanderson@btinternet.com or phone 01908 551440.

The closing date for this year's applications is **10th September 2020**

Grants

In February a grant of £500 was provided to **Keeping Kids off the Streets (KKOTS)** to help them to provide free boxing sessions for local children. The grant to be used toward hall hire and purchase of a boxing bag and boxing gloves.

In March we provided a £5000 donation to the **Covid-19 MK Emergency Response Appeal**. The Covid-19 MK Emergency Response Appeal was set up to generate much needed funds to support local community groups who are most affected and vulnerable at this time.

MK Community Foundation continue to award grants to a wide spectrum of projects and organisations from this Fund. More details can be found at: <https://www.mkcommunityfoundation.co.uk/news-events/grants-funded-through-emergency-appeal/>

In May, a grant of £1000 was provided to **Age UK Milton Keynes** to help them to continue to provide their Emergency Support Service to older people. (see page 9)

Also in May a grant of £5000 was awarded to the **Geoff Taylor Educational Trust** to enable the distribution of support grants to local people and a grant of £2500 to **Springfield Initiative Youth club** to support costs associated with running the youth club.

In June a grant of £450 was awarded to **Keech Hospice Care** to help support the Community Nursing team in the Parish.



VE Day Film Camp

During the February half term, which seems like a lifetime away now, Junior Filmmakers ran a film camp on behalf of Campbell Park Parish Council for young people within the Parish.

The theme of the film camp was VE Day. The young filmmakers met a veteran of the 2nd World War who landed on Normandy beach in his tank and who ended up marrying a German naval officer, the love of his life. They also met a man who was a child during the war and he told them stories of the bombs flying overhead, of running to hide in bunkers, of rationing and of evacuees to his street.

The filmmakers learnt about script development and writing, crewing, casting, acting skills, using the camera and did some editing. All that was left was for them to premiere their two short films on May 8th 2020 which was VE Day at the Milton Keynes Gallery. This was denied them due to the COVID-19 lockdown.

The films will now be premiered on November 6th 2020 at the Milton Keynes Gallery. It will be attended by the Mayor, family and friends, Milton Keynes Councillors and members of the community.

Following the premiere, the films will be made available online for viewing.

AGE UK Grant

Campbell Park Parish Council

Campbell Park Parish Council was very pleased to be able to award a grant of £1000 to Age UK Milton Keynes in May, to contribute to the ongoing provision of their Emergency Support Service.

The service operated throughout the COVID-19 lockdown period and continues to support vulnerable older people practically and emotionally, with many shielding until August. The delivery of this service helped Age UK Milton Keynes to engage with more older people than they could normally reach.

They were able to refer people to other free services, including

information and advice, hospital aftercare and befriending. During this time, they were able to support people with; emergency essential packs, prescription collection, shopping service, telephone befriending and meal parcels.

Their support focused on the over 70s and those with underlying health issues who were initially placed in isolation for 12 weeks. For some older people, their lockdown period has been extended for a further 12 weeks into August, so the continuation of the service was vital for many.

With approximately 10,000 older people aged 65+ living alone in Milton Keynes, and 51% of over 65s with long term limiting health conditions including COPD, heart problems and diabetes; there were many older people that were in need of help and in particular those with little



ARE YOU A STUDENT, AGED 16 OR OVER?

DO YOU NEED FINANCIAL HELP TO PURSUE YOUR STUDIES OR APPRENTICESHIP?

DO YOU LIVE IN THE PARISH OF CAMPBELL PARK?

If you can answer YES to all three questions, then this could be for you

Geoff Taylor Educational Trust was founded in 1994 to assist in the advancement of education for residents of Campbell Park Parish Council. If you need financial assistance with such things as tuition fees, travel expenses, or other incidental expenses the Trust could assist you.

The Trust also aims to help students in the Parish by assisting them to continue their further education in skilled trades industries, or employment by means of apprenticeships or training.

Application forms are now available for consideration in September **(The form can be accessed at www.campbell-park.gov.uk)**

Geoff Taylor Educational Trust
c/o 1 Pencarrow Place
Fishermead, Milton Keynes
MK6 2AS

Closing date for applications is Friday 28th August 2020.
Applications received after this date will not be considered

or no familial support.

In just the first 4 weeks of operating the services Age UK Milton Keynes were receiving referrals from family members (often living away from their older family members), from voluntary organisations and from older people themselves. They had recorded 737 interactions; 224 shopping runs, 81 prescription collections, provided 92 essential packs, set up 34 telephone befriending buddy's and delivered 306 meal parcels. 41 residents of Campbell Park Parish were noted to have been in receipt of these services.

Chair of Council's Annual Report 2019/20

Campbell Park Parish Council

This Council year has been one of excitement, commitment, and fear of where Covid 19 would lead us.

Landscape Contract

Excitement with Campbell Park Parish Council taking the big step of signing a contract with Milton Keynes Council to deliver the landscape contract for the whole Parish area. This was a wish of you, the residents of the Parish, in the previous years Parish Consultation, along with your agreement to a rise in Precept of £30 at Band D to allow the Parish to improve on the level of service we could deliver.

We recruited the first three members of the Landscape Team to enable us to start work on the Parish owned land with effect from 1st September 2019.

Commitment to the new service with the extension and remodelling of the Oldbrook Green Landscape Depot to house our new service and ensure the building would be suitable for the next 5 to 10 years. The work was carried out between December and March with it being handed back to us a week before the Covid 19 lockdown started.

During the year all of our Councillors and Staff worked tirelessly to ensure our services and projects continued to

come together for the good of residents. One of our senior officers retired in March 2020 after many years with the Parish. Mitch Mitchener had been an Environment Officer for the whole time that I had been involved with the Parish. Everyone who had worked with Mitch wished him well in his retirement.

Safety in the Pandemic

Fear was all around us in March 2020 with the spread of the Covid 19 pandemic. As a Council we took the necessary steps to ensure our Councillors and Staff safety. Officers started working from home whenever they could, and we closed the Parish Office to Councillors and visitors. It seemed a drastic measure at first but it soon became apparent that the right decision was made. Our services continued as much as possible with much work completed online and by phone.

The office has been ably run by our Admin Assistant Tracey with only 2 members of staff able to be in there at any time. I must personally thank all of our staff for the commitment they have shown to the residents and the Council.

We can only hope that we can continue to work through this pandemic and return to full capacity as soon as possible.

Councillor Terry Baines

Chair of Council



Buildings & Property Portfolio Committee Annual Report 2019/20

LANDSCAPE MAINTENANCE DEPOT- OLDBROOK GREEN

Conversations started early last year with the Parks Trust (the Landlord) to inform them of the plans to alter the building in readiness for it being used as a base for delivering the Parish-wide landscape service and given the opportunity to have an input/comment on the proposals.

The work commenced on site in December 2019 and completed in March 2020.

CPPC LANDSCAPE DELIVERY TEAM

CPPC have now taken over the delivery of the landscaping service from MKC and providing the service across the parish CPPC Landscape Delivery Team is now in place and using the facility at Oldbrook Green as their base to provide the landscape service across the Parish, however due to the ongoing situation regarding Coronavirus some of the activities have had to be re-scheduled.

PIRATE PARK, KERNOW CRESENT

is now in the ownership of the Parish Council. After months of negotiations with Milton Keynes Council, Campbell Park Parish Council have now taken over, through the Community Asset Transfer scheme, the play area on Kernow Crescent (see map). This play area, in a prime location in the middle of Fishermead, is very popular and we are keen to ensure that it



Campbell Park Parish Council		
Income and Expenditure Account for Year Ended 31st March 2020		
31st March 2019		31st March 2020
	Operating Income	
628,624	Central Costs	756,906
35,920	Oldbrook Centre	25,587
35,703	Springfield Meeting Place	34,479
1,744	Allotments	3,422
5,000	Grants	2,000
706,991	Total Income	822,394
	Running Costs	
284,729	Employment Costs	355,226
12,110	Democratic Costs	11,476
107,230	Central Costs	93,078
16,050	Parish Office	22,565
11,045	Communications	9,575
32,591	Oldbrook Centre	17,825
2,488	Oldbrook Pavilion	1,282
7,689	Oldbrook Green	8,144
2,224	Landscape Contract	396,962
27,044	Springfield Meeting Place	19,602
1,051	Woolstone Pond	393
5,514	Dog/Waste Bin Provision	5,583
1,381	Open Spaces	980
3,633	Allotments	2,515
8,096	Fishermead Sports Ground	5,534
15,249	Woolstone Sports Ground	1,138
22,961	Grants	20,300
47,664	CSW Projects	33,606
608,751	Total Expenditure	1,005,785
	General Fund Analysis	
152,864	Opening Balance	188,279
706,991	Plus : Income for Year	822,394
859,855		1,010,673
608,751	Less : Expenditure for Year	1,005,785
251,105		4,888
195,947	Transfers TO / FROM Reserves	39,961
55,158	Closing Balance	(35,073)

2021/2022 Budget/ Precept Consultation

You will, by now, have received the consultation letter and questionnaire asking for your views on the Parish Council budget for 2021/2022 and beyond.

As well as understanding the issues that are important to you and the area of the Parish that you live in, it is essential that we know what priority you place on them. We appreciate that issues and priorities will inevitably differ from estate to estate, there will however be many opinions that residents share regardless of location.

We know that opinion will be split between those who would like us to protect the services that we currently provide and those who would like us to keep the Precept as low as possible. Your feedback will help us to strike the correct balance when determining the future budget.

continues to fulfil the needs of local people.

As well as maintaining the play area to ensure it remains safe and operational, the Parish Council intends to make



improvements to the Pirate Park to enhance the play facilities and to address the garden area which has become overgrown and unattractive.

We have successfully applied for a grant from Milton Keynes Council and with match funding from the Parish Council it will be used to improve the garden area around the play park. We will, in the near future, be carrying out a consultation with the residents of Fishermead on the forthcoming refurbishment project.

COMMUNITY CENTRES

Both Centres have been used on a regular basis by groups providing community services. Springfield centre has been used by Melting pot to provide meals during the Coronavirus lockdown.

Maintenance/repair works have been carried out over the last twelve months; a new steel storage shed was installed at Oldbrook.

OBELISK SPRINGFIELD

A proposal has been put forward that the Obelisk be designated as the New City of Milton Keynes Uniformed Services Memorial. Further discussions are being held to establish the viability of the proposal

Cllr Ray Golding, Chair of Committee

PLEASE, IF YOU HAVE NOT DONE SO, COMPLETE THE QUESTIONNAIRE AND RETURN IT TO US IN THE PRE-PAID ENVELOPE PROVIDED.

COVID-19 CORONAVIRUS QUARANTINE

For Me!!!



last long because before 8.00 my brothers were waltzing in like they don't have a care in the world. So that was the end of getting any sleep in for the day. The first thing I said was 'happy birthday to you, happy birthday to you, happy birthday dear Michael, happy birthday to you'. Bet you never saw that one coming *eh eh he he.*

Turned out, both my brothers were going to shoot a music video. I know right ... he was leaving on his birthday to shoot a video during CORONA but I can't stop him. I made him a painting, so that pretty much summed up his birthday *BORRRING.*

Now it's June and my teacher finally managed to get in contact with me. That sucked because now I have real work to do. Do not get me wrong I was still incredibly bored but now I just had another thing to do which I didn't want to do.

So now my routine was pretty much sleep, eat, change, sometimes do work, brush teeth, Netflix, YouTube, ROBLOX sleep, repeat.

Then all of a sudden I found the urge to have a *dog* so I asked my mum and guess what she said 'yes' so the next day I asked my dad and he said 'yes'. So later on, that day I told my brother and he was almost as excited as I was. So we looked for a dog until we found four we liked. So we gave each one of them a call - one of them said they decided to keep the dog, the other was not allowed to leave home for another six weeks, the other did not pickup and the last one said that someone else was going to come and take a look at the puppy but ... wait for it, he said that we could come take a look at him if the other person did not like the dog. The person who went to check out the dog decided

Quarantine for me as been a terrible experience!!

It all started off in China and then Italy, but I never thought it would go world-wide and I never thought it would affect me ... but it did. When Quarantine first hit Europe, I was already isolating myself during school because we thought I had *CORONA-VIRUS.* And on the last day I wanted to go back but then school was cancelled so now I had to stay at home even longer!!!

The first few weeks I was living life but it got boring-and I'm talking next level boring- like looking into the distance for hours kind of boring.

So, then it was April *MY BIRTHDAY.* I had to have my birthday during CORONA but I couldn't postpone my birthday so ... When my birthday finally came, I was ecstatic but I waited and waited but I didn't get any presents until 11:00 at night because that is when Amazon was delivering. I got a new tablet and that was it ... out of all 10 of my presents on my list, it was all because of a disease. So that was my birthday - no birthday BBQ with my family, oh and no party with my friends - but other than that my birthday was great.

Then it was May, my brother's birthday month. When I first woke up I decided to sleep in because why not - there was no angry mum telling me I am going to be late for school and no teacher telling me what to do ... but that DID NOT

he did not want the dog so now we could go and see the dog, but then all of a sudden our dad shut us down so now we do not have a dog. Everyone was so bumped out but it seems daddy was not ready for a dog so ... that got shut down.



Then me and mum decided to start cooking again. We cooked mince packets, fish pies, honey glazed pork, melon and tomato salad and other things which I no longer remember. It was fun. Then a week or two later it was *fathers day!!!!* For Father's Day I made him a nice breakfast it had pancakes, raspberry coulis, raspberries, fried tomatoes, fried mushrooms, eggs and coffee. Daddy loved it.

Then later on that day I made a lovely lollipop cake, meat skewers, shrimp skewers, salad, sweet potato chips and normal potato chips it was delicious and then two days later it's today.

Hi I'm Esther and this is quarantine:':-(

My lockdown journey of self-discovery



I am a busy bee by nature. I am up and down, here and there. Stretching myself beyond reason with a super human strength I know I do not really have but work as though I do.

2020 promised to be a good year for my business. I had commissions, grants and projects and I was excited. January and February was spent having meetings, on the phone, sending emails, setting up activities right up until November.



Then March came and everything stood still and it was not because of anything I had done. Commissions and projects, and grants I was expecting just got withdrawn and it was as though they were all flying in slow motion out of the window.



I had to stop moving. I was made to stop moving. And so I learnt over the past months not to stretch myself across so much but rather to dig deeper into what I do and consolidate and focus more. I started to relearn to play the piano. I do French with my children every day and I run more.



I am still learning to prioritise, to say no to projects and activities that will bring me no value and do not line up with my vision. I am learning not to be available all the time. I am learning to think things through a lot more rather than just react.

I spent more time with my daughter. We watched cooking shows on Netflix and created some amazing foods and I have done painting with my daughter who loves to paint.

I have hated home schooling. I barely understand fractions and yet I am to help my daughter with her fractions.



I have learnt how unnecessary some things are—like shopping and clothes. But I miss parties and dancing and socialising. I miss the ability to get up and travel. Who knew that travelling was a freedom so taken for granted?

As the lock down eases I am in no hurry to go back to the way things were. Indeed, I will never go back to the way things were. It's been an interesting time and the lessons I have learnt during this period of lockdown and reflection and just slowing down will be something I continue to embrace and practice.

Cllr Nana Oguntola



"Dear Campbell Park Parish team The MK Melting Pot team would like to say a 'BIG thank you' for your valuable time, support and hard work for our COVID19 hot meal feeding programme and online cooking programme"

Well Done and Thank you to MK Melting Pot and all the volunteers involved delivering this valued service.



MK Melting Pot

— doing what they do best

Campbell Park Parish Council were very pleased to be able to offer MK Melting Pot the use of the Springfield Centre to enable them to deliver their COVID19 Hot Meal Feeding programme.

MK Melting Pot, at the start of the Coronavirus lockdown, identified a need and put the necessary plans in place to react very quickly to this and support many local families.

CPPC were able to help them identify high priority local families in need. MK Melting Pot were able to gain the necessary details of health issues, allergies and religious dietary restrictions and provide those households with a regular delivery of hot meals for every member of the family, with drivers waiting to ensure that the food and provisions were received safely. In addition to the hot food, essential items and food parcels were also supplied, tailored to the specific needs of the family.

During the 12 week COVID 19 hot meal feeding pilot programme, they delivered 2520 hot meals and 600 food parcels to the residents across Milton Keynes.

CPPC were also very happy to donate around 60 Easter Eggs to MK Melting Pot for distribution to the families being supported. The eggs, which had been purchased in preparation for the Parish Councils annual Easter Tea Party which unfortunately had to be cancelled, were very gratefully received. We received a lovely email from MK Melting Pot....

Lockdown in the Parish Office

Campbell Park Parish Council

The washing of hands soon became an obsession, even though it should have been second nature anyway!!!!

At first it was quite difficult for me being in the office on my own for long periods at a time as I do not really like my own company all that much! I do like to be social, so personally it was hard for me mentally.

When colleagues did enter the office, (we were only allowing 2 people in the office at any one time), you could feel the stress in the air.

Even though the cleaners were still coming in to clean the offices, I was still going around at least once a day to sanitize door handles, light switches, bannisters etc. just to be on the safe side.

I started to cycle to work from the beginning. The streets and roads were dead at first, and if you did happen to cross paths with anyone, they were almost jumping into bushes so as not to go near you. Also, people stopped talking to each other!!! As if you could catch it from speaking to one another.

Strange....

One thing which I did notice that really made me cross was the number of gloves and masks left on the roads, floors etc.

How is that helping the situation?

It beggars belief... On a more positive note, it was lovely to ride to work in the fresh air and the birds could clearly be heard

singing without all the noise and pollution of vehicles.

After several weeks went by the streets and roads did become busier, with more people being out and about. Most were keeping to the 2metre rule, but some were just going about as if there was nothing wrong.

Playground Closures

When we were told to closedown playparks etc, some of our Councillors worked tirelessly to keep residents from using them, but it was an uphill battle. Hundreds of posters were printed, laminated and placed around all of our parks, only to be pulled down by people. The lovely weather over the Easter weekend didn't make it any easier either.

Vulnerable Residents

The main issues at the beginning of the Covid-19 virus were vulnerable residents calling in worried about how they were going to be able to get food and provisions, especially if they had no family in Milton Keynes.

I had been provided with a few numbers for emergency food parcels and a hotline for people who were struggling with other issues due to the virus, plus a delivery of fruit and veg could be obtained from a local market stall holder. These proved to be useful for quite a few residents.

Helping hand from our Councillors

Those of our Councillors who did not have to self-isolate, stepped up to the plate offering to collect and deliver pre-paid prescriptions to those who



COVID-19
CORONAVIRUS

telephoned into the Parish Office. One of our more senior Councillors went above and beyond in helping an elderly gentleman who was in bad health.

Another of our Councillors has been shopping for at least seven vulnerable residents, collecting and delivering it to their homes. Doing a great job.

With all the fast food outlets being closed there was less litter on the streets, but within days of them being opened again the roads and grass verges were soon littered with food boxes etc.

As the weeks went on, more people were out and about. Then with some businesses gradually getting back to some form of normality, the roads soon became a lot busier.

There were also less telephone calls into the office regarding the picking up of prescriptions etc, as the lockdown was slightly lifted.

Tracey Waistnedge

Admin Assistant



New Ways of Working

Campbell Park Parish Council

Last year I had the opportunity to do a course on digital disruption with Cambridge University. It was funded by Campbell Park Parish Council where I serve as a Ward Councillor.

One of the first things the lecturer said was that the old ways of describing organisations as 'industries' was now redundant and that we now need to look at organisations within eco systems and networks.

The course described the ability of organisations to survive and harness digital disruption as a tool which would empower and change the way businesses and organisations are run and how they succeed in the future. A few months later we are in the midst of COVID 19 and digitisation is not just a disrupter but becomes the only option for many organisations and businesses.

Organisations not used to using

digital technology now find themselves forced to innovate to communicate and work digitally.

Business and individual entrepreneurs started to pivot and innovate, using digitisation not as the disrupter but as an enabler for different, new, innovating and exciting ways of doing things, creating new networks and eco systems to grow and sustain their businesses.

For many the new scary virtual world was thrust on them and they had to tiptoe into and find their way around it trying to hold on to handles which would allow them to navigate the vastness of this space.

For others the vastness of this space provided the opportunities to elevate, to explore and to reinvent.

I would suggest that just as my lecturer called the 'term 'industries' 'redundant', so the term 'digital disruption' has become 'redundant'. COVID 19 was the disruption we did



not foresee but digitisation is now the enabler, the facilitator, the space which will allow us to create our new way of working, our new ways of connecting. Digitisation is a world we have entered and we can never go back. We must embrace it without fear and harness its power for the good it can do.

Of course one cannot write a piece without a nod to those who will wish to highlight all the evil that is possible in this new and exciting virtual world. But all of that evil is also possible outside it. Like everyone else the crooks will also innovate, but this cannot stop what you and I MUST do.

Because the clarion cry 'innovate or die' has never been louder than at this present time.

Nana Oguntola

Advice Work to Resume

As we are all aware the last few months have been unusual and has resulted in hardship for many families.

Campbell Park Parish Council is here to assist residents with advice on a number of issues including assistance in completing Benefit forms, Housing, Energy bills, Council tax, linking you with the Domestic Violence Team and other support organisations. If you are unsure of matters related to any of the above, please contact us and leave a message giving brief details of the issue you are worried about. Leave your contact details and our Advice Worker will get back to you.

The Advice Service will resume slowly, when it is safe to do so and we are hoping to restart the service on Wednesdays and Thursdays in the month ahead.

We still need to continue to maintain social distancing according to Government guidelines.

If you need to see the **Advice Worker**, please call the Parish office and make an appointment. When attending the appointment, although you may have a family member or friend to support you, we can ONLY see one person at a time.

Do not wait until it is too late to sort out your bills or apply for relevant Benefits that you are entitled to receive.

If you don't ask, you'll never know how and who will help you!! For contact details see page 4

KID'S CORNER



Hello Children,

I hope you are all keeping well. It has been a long time since I last spoke to you all. I have missed talking to you, and life is very different. Home schooling, no play parks, shops closed, but now that things, after 14 or 16 very long weeks, we are beginning to be able to go out again, Hurray!! Hopefully I will be able to see some of you in school. As from September this will be the new normal for us all.

So, a **new competition** for you, **"Name the Tractor"**. A great prize. The lucky winner will receive a £25 gift card for WH Smith.



Just send your answers into the Parish Office, with your name, age. (up to the age of 16), name of school, and your address. You can also send an e-mail with your answers.

Entries need to be in by the **30th September**. You will receive your prize in the half-term. Good luck, and get your thinking caps on!

Keep safe, look after younger children if you are out without a grown up.

REMEMBER STRANGER DANGER

Until next time
Cllr Penny.

P.S: If you send anything into Kid's Corner we need to know your name, address, your age, and what school you go to, or we cannot send you your prize.

Hello from John and Daniel

If you see them when you are out, say hello, they will be happy to talk to you.

John



Daniel



Things to do in the Summer Holidays:

You can win a £10 gift card if you send in any of the following.

A photo of wildlife, your garden, or you in your garden with what you have grown, i.e: sunflowers, vegetables, or grass cutting.

Send your photos in or a story you have thought of. There will be 5 lucky winners.

Try to play games where you don't have to get too close to each other. Look after each other.

You can write to me at the Parish Office if you need to chat or tell me about your holiday.

You will always get a reply.
All entries will get a bottle of bubbles.

So, bye for now.

THE JOHN BADGER AND DAN FOX DIARIES



John and Dan are busy on Oldbrook Green. They are building an extension on the Pavilion. It will look very tidy when it is finished. Of course, Cilla Comfy Cat and the Bunny diary makes lots of mess so the Bunnies are busy, busy, busy. Cilla makes sure every bit of rubbish is in the black bags. She likes everything to be "Spot on", that means very tidy!



After work Cilla will have a cream tea ready for John, Dan and the Bunnies. Comfy Cats love tea parties. Lots of sandwiches, cakes and buns. Washed down with a nice cup of tea. The only thing is, they will have to do it all again tomorrow!