

ISSUE: NOVEMBER 2020

The magazine from Campbell Park Parish Council

Homeground

WILLEN WINTERHILL OLDBROOK FISHERMEAD SPRINGFIELD NEWLANDS WOOLSTONE

SUMMER TREASURE HUNT



Competition Winners
Page 6 & 7

Budget Consultation 21/22

Black History Month

Landscape Update

follow us on



www.campbell-park.gov.uk



CAMPBELL
PARK
PARISH
COUNCIL

Caring within the community

MEET THE COUNCILLORS

WILLEN



**CHRISPINA
ODUNEWU**
07459 889199



**VAL
DIXON**
07596 264040

OLDBROOK



**KATHERINE
KENT**
01908 331935



**TOM
FRASER**
01908 607033



**VICE CHAIR
BRIAN GREENWOOD**
07956 384000



**KEITH
JONES**
07719 897101

WOOLSTONE



**FRANCIS
MENSAH**
07405 294756



**DAVID
PAFFORD**
01908 608559



**TUBO
URANTA**
01908 982626



**ELAINE
DICERBO**
07885 518252



**RAY
GOLDING**
07540 283157

SPRINGFIELD



**ADAN
KAHIN**
01908 608559



**KARL
KAVARANA**
07702 026414



**NANA
OGUNTOLA**
07737 750394

FISHERMEAD



**CHAIR OF COUNCIL
TERRY BAINES**
07846 697237



**PENELOPE
HALTON-DAVIS**
01908 696034



**DARRON
KENDRICK**
01908 669067



**MARTIN
PETCHEY**
07712 485255



**VACANT
SEAT**

Parish OFFICE STAFF

CLERK TO COUNCIL
DOMINIC WARNER

ADMINISTRATION OFFICER P/T
ELAINE WEBB

COMMUNITY OFFICER / COMMITTEE CLERK
P/TIME **TRACEY JONES**

ENVIRONMENT OFFICER
JOHN McLINTON

RESPONSIBLE FINANCIAL OFFICER
P/TIME **LISA BRADLEY**

ADMIN ASSISTANT
TRACEY WAISTNEDGE

LANDSCAPE MANAGER
DANIEL MOTT

LANDSCAPE SUPERVISOR
SOPHIE GIBBENS

ADVICE WORKER
PRISCILLA HOGAN

HOW TO CONTACT US

T: 01908 608559

E: admin@campbell-park.gov.uk

W: www.campbell-park.gov.uk

The Parish Office has now been closed but will still be "open" for phone calls and emails and our staff will continue to work remotely. Whilst there will be some things that may take longer, we will endeavour to ensure that we continue to respond where we can and continue to support our community whilst maintaining the "social distancing" that has been encouraged. Our Advice Service can still be accessed via email and phone.

MEETINGS

All meetings to be held remotely, members of the public can access and participate at the meetings through the use of Microsoft Teams – see Parish Council website www.campbell-park.gov.uk/ for details.

See page 14 for next meeting dates

A live stream of the proceedings will be available at the following link:
<https://www.youtube.com/channel/UCOSIXXjdIEzu2sxQODiNCQ>

2021 - 2022 Budget / Precept Consultation

Campbell Park Parish Council

We would like to thank all our residents who responded to the consultation. Although the response rate was slightly down this year, on average we continue to achieve a 10% response rate.

The questionnaire was divided into 3 sections, Campbell Park Parish Council Service Provision, Landscaping and Precept.

In the first section you were asked to prioritise 3 out of 12 services, which you thought the Parish Council should deliver, namely

Community Centre improvements

Ongoing improvement of Parish recreation & sports grounds

Projects to increase/build 'Community'

Grants to local community groups & community facilities

Civil Contingency response and resources

Parish Wide Landscaping Service

Local traffic schemes/improvements

Play area improvements (in partnership with Milton Keynes Council)

Dog waste bins
Litter bins

Projects to improve the 'Wellbeing' of Parishioners

Community legal representation on planning issues

Following Council's decision to take over the delivery of landscaping within the Parish, in section 2, residents were asked to prioritise two of three categories:

Improve Grass Cutting

Improve Hedge Cutting and

Large Open Green Space Improvement

Section 3 invited residents to comment on a percentage increase for the Precept. Residents were informed that the Parish Council had made an "in principle" decision to increase the precept by 5% equating to an additional cost of £9.23 per annum on a Band D property.

SUMMARY

The returns broken down by ward were:

Fishermead - **5.17%**

Oldbrook - **9.86%**

Springfield - **12.64%**

Willen - **19.26%**

Woolstone - **26.43%**

[% based on the return rate for each ward]

On a Parish-wide basis, the first priority for CPPC service provision was the Landscaping Service [29.45%], with Litter Bins coming top of both the second and third priority categories [18.64% and 14.38%] respectively.

All percentage figures are based on the number of respondents

who completed each section.

Residents priorities have changed over the years, our first consultation highlighted antisocial behaviour but now residents have confirmed that their overriding priority is the physical appearance of the Parish, namely the landscaping and litter.

Landscaping Service

With your backing and support, Council took over the delivery of the landscape service from Milton Keynes Council in April 2020, and in order to develop an effective Parish wide maintenance strategy, residents were invited to prioritise two areas that they believed would make a positive impact on their area. Their first priority was Hedge cutting (64.21%) with Grass cutting as their second priority (40.16%). Fishermead and Woolstone bucked the trend identifying Large Open Green Space Improvement as their second priority.

In Section 3, we asked for your views on increasing the precept.

In our introductory letter to the consultation, we advised you that the Parish Council had made an "in principle" decision to increase the precept by 5% equating to an additional cost of £9.23 per annum on a Band D property.

We were pleased that you acknowledged that providing services costs money and this was reflected in your response, with 69.24% of you in favour of increasing the precept up to 5% compared to 30.76% who were against a rise in the precept.

2021 - 2022 Budget / Precept Consultation cont..

Your response to the consultation will be considered by our Committees and Council over the next 3 months and will assist us in setting our targets and budgets for 2021/2022.

The full report with a breakdown by wards is available on our website. Once again we would like to thank you for taking the time to respond to the consultation.

The Parish Council is here to serve the needs of our residents

and where possible to deliver the services you would like.

We not only value your input but need it to serve you in the best way possible.



Additional Comments

Residents were invited to identify the location within their area that needed particular attention with regard to grass cutting, hedge cutting and large open green spaces.

There were 126 comments in total.

The areas identified will inform the Landscape Schedule of Work

The breakdown by wards includes the additional comments made by respondents.

Grants

In October we were very pleased to award a grant of **£1000 to Melting Pot MK** towards their project to deliver online cooking classes. The project is aimed at people struggling to access employment. These cookery classes will provide the opportunity to building confidence, but also will engage participants in family social interaction to help keep integrated with people in the online sessions. These classes will help to empower vulnerable people and to foster a sense of community during these times of social distancing.

Thank you from Keech Hospice Care:

"We were delighted to receive the grant that the Councillors have awarded us towards our children's services. I cannot tell you how much your support at this time means to us, thank you.

Following the outbreak of Covid-19, the care we provide for seriously ill children and their families is needed now more than ever. Whilst some things have changed, the quality of our service has not.

We are continuing to provide children and their families with as much support as possible during this time, albeit in new and innovative ways. Over the last couple of weeks, we have managed to have our first virtual children's day support session. It was wonderful to see so many families taking part and receiving much needed support from our care team and other families.

Your kind donation of £450 will enable us to continue to provide our specialist care to children from Milton Keynes who have been diagnosed with a life-limiting or terminal diagnosis.

Thank you for helping us to make the difference when it matters the most."

St Marks Meals have reported back to us about their successful project following their grant award of £1000 in September 2019. With the support of the Parish Council they were able to provide 200 food boxes to families in need.

The original aim of this funding was to enable St Marks Meals to open in 10 new partner sites across Milton Keynes, who would store Meals Boxes ready to provide to families who need them. Since September 2019, they actually opened with 22 new partners, far surpassing the original aim and, since the beginning in April 2019, have provided over 1300 family meals to those who need them.

"Thank you so much for your support and for helping us in the fight against child hunger."



CARE AT HOME



Quality support in your own home

**FULLY TRAINED & DBS CHECKED
TEAM MEMBERS**

24-HOUR MANAGEMENT SUPPORT

**SHORT TERM OR PERMANENT
SERVICE AVAILABLE**

- LEARNING DISABILITY
- DEMENTIA CARE
- PALLIATIVE CARE
- PERSONAL CARE & COMPANIONSHIP
- LIVE-IN CARE

**"Thank you for arranging such a pleasant,
attentive & caring carer to support mum"**

Emiran HealthCare
Providing a real alternative
to a care home

**For an information pack
or to speak to a member
of our friendly team call:**



NP-50/B, iCentre, Interchange House, Howard Way, Newport Pagnell, Buckinghamshire. MK16 9PY.
01908 299170 • 01908 348771 • 07424 003818

info@emiranhealthcare.co.uk • www.emiranhealthcare.co.uk

SUMMER TREASURE HUNT

Campbell Park Parish Council

For the safety of our parishioners, with the new Covid-19 regulations and social distancing measures in place, our Community & Social Wellbeing Committee had to take the sad decision to cancel the programme they had in place for events during the summer.

However, they were determined to provide something exciting for local children to get involved with during Summer. Having been stuck indoors for such a long time during the lockdown we really wanted to encourage families to get out and about around our Parish during the 6 week summer holiday – so we had the idea of organising a treasure hunt.

We bought 6 portable signs that we could move around each estate within the Parish, each with a different character on, and the children from Jubilee Wood School came up with names for each of our characters. So, at the start of the Summer Holiday, we welcomed 6 new 'friends' to the Parish Council team!



SASHA
THE SEEKER



IVAN
THE INVESTIGATOR



NAIMI
THE NERVOUS



HARVEY
THE HUNTER



FELIX
THE FINDER



DELILA

THE DETECTIVE

Over the course of the 6 week holiday we moved our friends around the Parish and then posted clues about their hiding place on our Facebook page. Local families then went out walking, scooting, cycling, skipping and jumping to look for them.

Each time the children found a new friend, they would have their photo taken with them and at the end of the 6 week holiday these photos were sent to the Parish Council to be entered into a prize draw to win some treasure.

Every child that took part received a certificate for being a Super Treasure Hunter.

We received some lovely feedback about the Treasure Hunt:

"I would like to say a big thank you to everyone who organised such an interesting attraction for kids during the school summer holiday, it is an amazing way to walk and cycle more around the area where we are living. My daughter was so excited when her Jubilee Wood Primary School shared information about the Summer Treasure Hunt 2020 and she is still waiting when new clues will be posted on your Facebook Page, because it is very interesting to search for those 6 new friends. We have already found all 6 friends, but we did not stop waiting for new clues and searching them in different places, it is really a great attraction."

"I would like to thank the Campbell Park Parish Council for organizing this Treasure Hunt. Me and my children had lots of fun, finding and discovering new playgrounds. "

"I enjoyed so much doing this treasure hunt with my sister, who is 4. Whenever we went out and about we were hoping to meet one of these lovely characters and we asked mummy for clues every single day and visited your office very often to check if any of the kids would be outside :)

The hard-to-find ones were Harvey (we went around Willen for hours

to find him on a hot hot day!) and Ivan (today we went around our school about 3 times to search for him haha) but we finally spotted them all yaaay!

Thank you for a great idea for our summer holiday and for everything that you do in MK. Stay safe everyone!"

"Thanks for conducting this treasure hunt. My girl loved it."



Well done to Jessica and Chloe who won the first prizes - an Amazon Fire 10 tablet



Well Done to Archie, Mathias and Deepthi who were our runners up winning an Art Set & Sketch pad each.



KEEP AN EYE OUT FOR OUR FRIENDS - we are sure they will be coming out to play again soon!

Like our Facebook page 'Campbell Park Parish Council News' to keep up to date with all our activities.

BLACK HISTORY MONTH

Milton Keynes

October was Black History Month in the UK when the spotlight is placed on the contributions and achievements of people of black heritage in the UK.

In Milton Keynes a website was created which featured some of the first black professionals to arrive in Milton Keynes including the first policeman, one of the founders of the gynaecological unit at Milton Keynes Hospital and the first youth worker.

The website further identifies leaders within the black community in Milton Keynes and also features the stories of contributions of people of black heritage nationally and globally across science, music, art, sports, politics and more.

To see more about this special Black History Month website for Milton Keynes you can visit www.bhmmk.co.uk

Photograph is Mr Albert Bernard, one of the first black policemen in Milton Keynes



Councillors donate to resident for cleaning efforts

Recently some Councillors from Campbell Park Parish Council made a donation of a £50 Frosts garden voucher to a young man called Gavin to show appreciation for and to encourage his good work in keeping the area near his home clean, tidy and pleasing to the eye.

Gavin had taken it upon himself to personally clear the area, cut away all the hedges and create a haven at the junction of Polruan and Towan Avenue in Fishermead.

The donation was made by Councillor Ogunbola and she informed Gavin that the Council had noted his efforts and wanted to encourage him to keep up the good work.

Finance, Administration & Policy Committee Chairs End of Year Report 2019/2020

Campbell Park Parish Council

We started the 2019 Council year thankful that Milton Keynes Council had kept their promise to pay our Local Council Tax Reduction Scheme (LCTRS) grant.

As a Council we had been fighting to keep this much needed money to replace the precept that is not paid by those residents in receipt of benefits. It did though come with a sting in the tail when we were told that we would see a reduction in 2020/2021 and it would end in 2021/2022.

Annual Consultation

Campbell Park had already sent out our annual consultation on what the Residents wanted to make their priorities for the year and we had set the Precept accordingly. The residents wanted us to improve where we live by means of better landscaping and cleaner streets. Council made a decision that we would take on the devolved landscape contract and to deliver that contract in house with a direct labour

model. Along with taking on Landscape staff we then started the procurement process for the equipment that would be needed. The long list of vehicles and equipment came as no surprise but the cost did make my eyes water when the total cost was calculated. Purchasing our three vehicles outright and using Hire Purchase for the equipment was by far the best decision made to ensure it was affordable and transparent use of public money. We already had the Landscape Depot on Oldbrook Green that we intended to use to base the team and equipment but it just was not big enough. A planning application was submitted to MKC which was granted, and the build started just before Christmas 2019. Our builder handed the finished depot back to us in the middle of March just in time for the official start of the devolved service. The cost of the depot went from £125k to a total of £165k due to extras that were necessary.

Grants

The Council continued to support local groups and charities across the Parish along with making grants under the Section 137 scheme which allows us to give money up to £1000, or £1500 if a new start up group. Improvements were made to play areas using match funding available through MKC.

Council ended the year with a negative General Reserve which although not ideal is not unusual where unbudgeted expenditure occurs, such as the Landscape Depot and Vehicles. I stand by the decision made by Council

to ensure that the service would be able to start in April 2020 and be successful. The level of the negative General Reserve was offset partially by the restructuring of our Parish Office New Build Earmarked Reserve which we knew would not be needed in this year.

Looking Ahead

Going forward the Finance Committee were happy to see the LCTRS money paid although as was expected at a lower amount, and at the time a higher tax base due to a lower number of residents claiming benefits, and after some keen discussion with MKC an increase in the Landscape grant due to inflation.

MKC have already made it clear that LCTRS will not be forthcoming in April 2021 so Council will need to have a serious look at our finances with a reduction of £43,000 in its income. You the residents have though spoken in high numbers in your responses to the annual Parish Consultation and told us that you want to see services improve and increase, and that will be taken into consideration during our budget setting discussions.



Cllr Terry Baines

Chair of Finance, Administration & Policy Committee.

Community Garden Champions Wanted!

The City Discovery Centre at Bradwell Abbey working with InterAction MK has created a community garden, growing produce, a sensory garden and is planning a children's garden.

Fantastic volunteer input has built a garden from scratch now full of beds, fruit trees a willow feature and two Polytunnels.

We are now looking to set up a Community Garden Club; a small volunteer band of experienced and knowledgeable gardeners who can spare some time to help us make a garden even more productive and enticing.

Is this you?

You may have skills in:

- Working with volunteers
- Working in an allotment
- Planning planting and maintenance schedules
- Getting stuck in with the weeding and watering
- Growing to attract and protect wildlife
- You can give around 4 hours a week (flexible)

If you'd like to make a difference in your community, join our friendly team and want to find out more then contact Maggie at mrogers@interactionmk.org.uk

We'd love to hear from you.



Attention Users of Bus 28 - Vale Travel

The 28 Bus Service, operated by Vale Travel, will be stopping on 24th October. This route currently runs from Bletchley to Westcroft, with stops in Oldbrook and Fishermead.

To ensure everyone retains access to transport MK Council Passenger Transport have let an emergency contract for Demand Responsive Transport to cover the area served by the 28 service. To use this service passengers will need to make a booking through the ViaVan App.

As of 25th October, the Demand Responsive Transport (DRT) service will run
7am – 7pm Mon-Sat and
11am – 4pm on Sundays.

DRT journeys will need to take place completely within the area but can connect passengers to other transport routes. We are advised that the single fare price is £2.50 and that ENCTS cards and AllinOne passes will be honoured initially.

All arrangements are subject to change as they respond to the requirements of users.

Wheelchair accessible vehicles may not be available immediately but are being sourced and mobilised rapidly to ensure access for all residents.

The number to ring is 01908 252526 and will be available during MK Council office hours Mon - Fri 9.00am - 5.00pm to assist in bookings for those without access to a smart phone.

We await more information on this new service and we will keep you informed with any updates/changes as we receive them.



Oldbrook First School Nursery

FUNDED PLACES AVAILABLE



FULLY QUALIFIED TEACHER



NOW TAKING REGISTRATIONS FOR 3 AND 4 YEAR OLDS



ENQUIRIES

Fun and exploration are essential ingredients at Oldbrook School Nursery, where care, educational opportunities and nurturing support every child to develop and flourish. Please contact us for further information or to arrange an appointment to look around our purpose-built Nursery where we provide high quality nursery education for 3 and 4 year olds.

☎ 01908 604689

✉ office@oldbrookschoo.co.uk

🌐 www.oldbrookschoo.co.uk



Community & Social Wellbeing Committee Chairs End of Year Report 2019/2020

Campbell Park Parish Council

Hi everyone

Firstly, I would like to introduce myself as Cllr Elaine Dicerbo and Chair of the Community and Social Wellbeing Committee. The ward I serve is Oldbrook, although I work closely with my fellow Councillors of Campbell Park Parish Council. (CPPC).

Our Committee members

are: Cllr's Penny Halton-Davies (Vice-Chair); Tom Fraser; Darron Kendrick; Val Dixon; Nana Oguntola; Chrispina Odunewu and Karl Kavarana. I have been part of this Committee for 3 years and I have had the pleasure to lead the team for the past year.

Our Committee's main purpose is to develop:

1) **Community engagement:** make our Parish areas of Springfield, Woolstone, Willen, Fishermead, and Oldbrook a good place to live in partnership with residents.

2) **Social Inclusion:** Create a socially inclusive culture in our Parish as we have a diverse population.

3) **Wellbeing:** Create a healthy society where we live. We want to encourage people to take their wellbeing seriously and we partner with Healthwatch MK which is part of the NHS Clinical Commissioning Group. We want to look after our resident's wellbeing and support them to have an environment that contributes to their wellbeing which also helps our local children to grow and flourish.

We work well with our local

schools and Cllr Penny builds those relationships and is popular with all the children. We worked with our local schools and paid and organised school trips to Hazard Alley which taught all year 5/6 pupils about the dangers on our roads to increase their awareness of local hazards.

We supported many organisations in our Parish with local grants and offered our premises throughout lockdown for Melting Pot for meals to give to people in need.

We have created a Parish database to work with local stakeholders to benefit residents. We have helped many residents by collecting prescriptions.

It is our ambition to set up a **Community Partner taskforce** made up of local people that can support the Parish Council to achieve our ambitions. We have organised Summer Picnic's,

Easter and Halloween parties. We have purchased Virtual Reality equipment for use in our Parish.

Unfortunately, due to Coronavirus we have been unable to carry out all our ambitions this year. However, we held a treasure hunt and purchased (6) 'Parish little people' which were placed throughout our wards during the school holidays.

If you want to join our taskforce, please email me your details and thank you in advance.

Elaine.dicerbo@campbell-park.gov.uk.



Councillor Elaine Dicerbo
Chair of Community & Social Wellbeing.

Oldbrook Green

Campbell Park Parish Council

In order to prevent the unlawful use of Oldbrook Green as a camp site, Campbell Park Parish Council has created barriers around the Green.

The barriers are low so they do not obstruct people's views of the grounds and are also eco-friendly.

Ultimately we will plant hedges around the Green but for now this is our swift response to the issues we have been having with people parking their vans and caravans on the grounds.



View from Evans Gate



View from Oldbrook Boulevard



This September has been an interesting but exciting time for our children and families returning to school after the recent lockdown.

It has been wonderful to see such happy children return with excitement about the new academic year ahead. Our school team has been amazing during the lockdown period, supporting our pupils and families through remote learning. The school community that we serve has continued to flourish, completing lots of amazing home learning and discovering the lovely green spaces that Oldbrook and Milton Keynes have to offer.

This Autumn we also welcomed our new Reception and Nursery children into our care. They have been fantastic and are enjoying the wonderful range of learning experiences on offer in our well-resourced learning spaces, both inside and out. They have been learning about Harvest, thinking about where our food comes from. They have picked apples from our tree, made apples using dough and made a 'delicious' Harvest crumble. They have also looked at patterns in the world around us.

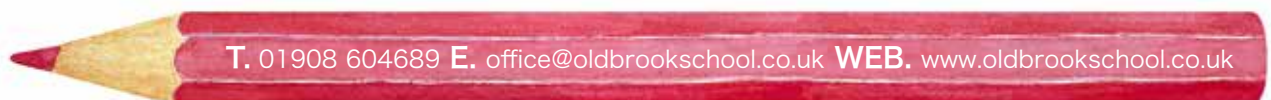
Children in Year 1 have been learning about our local environment as well as where animals live

and plants grow. They really enjoyed reading lots of stories about Percy the Park Keeper. The children were very excited when a range of animals came to visit!

Children in Year 2 have been learning about the Great Fire of London. They have learnt how the fire started, how the fire spread so quickly and which historical figures gave accounts during this time. They have produced some amazing writing!

If you have a child who is due to start school in September 2021 and would like to find out more about our incredible community school then please contact the school office to arrange a school tour. We are a happy, nurturing school with a well-established reputation for providing excellent education. We pride ourselves on a strong partnership between home and school because we know that 'Living and Learning Together' is the most successful way to developing pupils to their full potential.

Best wishes
Mr Hopkins, Headteacher



Personnel Committee

Chairs End of Year Report 2019/2020

Campbell Park Parish Council

The Personnel Committee oversees all matters relating to the employment of Staff and the wellbeing of Councillors.

As the Annual Meeting of the Parish Council was postponed this year due to COVID-19, the Chairperson and Committee members remains the same.

The Parish Council employ 15 staff, 8 full time and 7 part time staff which comprises of the office staff, advice worker and caretakers who look after our Community Meeting places, and the Landscape Team who deliver our landscaping service. Our staff are working from home as well as in the office.

The Committee continues to support and ensure that all our staff are up to date with their training requirements and support their own needs for their own continuous professional personal requirements.

Some of the personnel items with which we deal with within the Parish Council are;

our compliance of Health and Safety Regulations,

the Staff Handbook,

continuous Professional Development,

the Staffing Establishment and conditions of employment.

Management and appraisal of the clerk to council.

appointment of Staff,

recommendation of salary awards,

grievance appeals,

the staff sickness levels and attendance levels,

review annually the terms of Reference prior to the annual Meeting of council,

submission of items within the Personnel remit for inclusion in the budget for the following year

and to prepare a Draft Budget covering all Personnel Expenditure.

Cllr David Pafford,
Chairman,
Personnel Committee



CAMPBELL PARK ADVICE SERVICE


FREE SERVICE

Are you struggling with money?
Do you need a listening ear?
Pop along and speak to our advisors in confidence

C
P
P
C

SOME OF THE ISSUES WE CAN ASSIST WITH ARE


- Any housing matters related to rent arrears and or Discretionary Housing Payment
- Benefits (advice or form filling)
 - Rent or Council Tax arrears
 - Family or domestic difficulties
- Any other concerns you would like to discuss



To find out more, please pop into the Parish Office, or contact us on the details below

CALL US NOW! 01908 608 559

1 Pencarrow Place, Milton Keynes MK6 2AS
 campbell-park.gov.uk
 cpas@campbell-park.gov.uk



Landscaping Report

Campbell Park Parish Council

We started on this journey last year for the Parish to deliver a landscape service to its residents. There was a great deal of planning and development to get us to the point where we started the service.



order across the Parish we need to focus on areas one at a time. This focus will allow us to plan work going forward for the coming years and provide a structured approach. The team is looking forward to making improvements and starting to deliver better landscaped areas.

In this process we will not be able to do everything at once but trying to ensure we can maintain the areas we do for the future. The task of controlling the ever growing and much overgrown overgrowth will take its time.

We are aware of many of the issues and will always be working hard to do what we can.

We have now started with our busy winter maintenance program which will put us in

Willen – October

Springfield – November

Woolstone – December

Fishermead – January

Oldbrook – February

**THE TEAM IS WORKING HARD TO MAKE
THE LANDSCAPE BETTER FOR ALL.**

Meeting Dates

All meetings to be held remotely, members of the public can access and participate at the meetings through the use of Microsoft Teams – see Parish Council website

www.campbell-park.gov.uk/
for details.

THE NEXT MEETING DATES ARE:

Council

17 November, 15 December,
19 January & 16 February

Committee Meeting

Planning, Infrastructure

& Transport

30 November,
4 January & 1 February

Finance, Administration

& Policy

1 December & 2 February

Buildings & Property Portfolio

10 November, 8 December,
12 January & 9 February

Community & Social Wellbeing

23 November & 25 January

Communications

24 November & 26 January

**A live stream of the
proceedings will be
available at the
following link:**

<https://www.youtube.com/channel/UCOSIXXjdlEzu2sxQODiNCQ>

KID'S CORNER



Hello Children,

I hope you are all keeping well and safe!! How is school going? I expect you are glad to see your friends again?

Life is quite different at the moment, so lets move on and do a few new things.

DO YOU KNOW ANY GOOD JOKES? If you do, send them in to Kid's Corner. If it goes into the next magazine you will win a gift. Let us know your name, address, school and your age.

Here is the first joke...

Q) Have you ever seen a banana jump??
A) No! Neither have I. Do you think they do it at night!!!!!!

IN THE NEXT ADDITION OF HOMEGROUND.

A new project is going to be **Pennys' Pantry**. We will do a simple and easy recipe for you to do with a grown up. Some sweet simple savoury dishes, Yum! Yum!. I am looking forward to that.

Sadly no one took part in the "Name the Tractor" Competition. That is the first time ever that we have not had a response. So, for the final time, you can "Name the Tractor" to win a £25 gift card for WH Smiths.



I am so sorry that due to Covid 19, we will not be able to have the Halloween Tea Party this year. I do hope we can do it again in 2021. Last year was the best party we have had, so look forward to the next one!

I am not sure about Easter yet. Let's hope the virus goes away so we can have some FUN, FUN, FUN!!!!!!

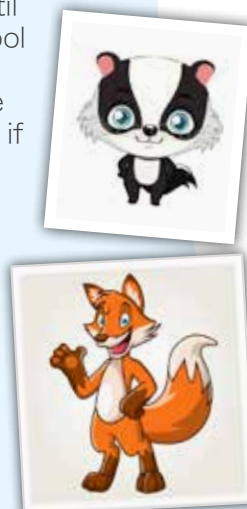
I have not been able to come into the schools this term and I am missing you all, but it is not too long until Christmas, so we will drop your plates off at school for you to take home and finish. Please put your plate in your front door/window and we will come around in the van and take photos. You will know if you have won by post.

Cllr Penny

Keep safe, look after younger children if you are out without a grown up.

REMEMBER STRANGER DANGER

P.S: If you send anything into Kid's Corner we need to know your name, address, your age, and what school you go to, or we cannot send you your prize.



This is a photo of a hedgehog taken on holiday by Chaz.

NATURE WATCH

He used to go to Jubilee Wood and now he is in year 10 at The Academy.

Chaz has been sending us photos for 6 years. Thank you.



Hello from John and Daniel

If you see them when you are out, say hello, they will be happy to talk to you.



THE JOHN BADGER AND DAN FOX DIARIES

Dan Fox and John Badger have found an old metal detector. John gave it a clean up and got it working again. They set off along the canal bank to try and find some treasure. "Not very nice today, it's cold and windy" Dan said. He lost his cap in the water. "How am I going to get that back? he said, crossly.

John looked around for something to hang on to so that he could try and reach Dans' cap, but he didn't have any luck. A big gust of wind made John lose his balance. What do you think happened next? Yes, John fell into the canal. He was so cross, but he managed to get the cap. As he did, he could see something very shiny in the water. John is not very keen on getting wet, but he took a deep breath and swam right down. He found something long and thin, but it was stuck in the mud. How will he get it out???

TO BE CONTINUED!!!

Play Area Improvements at the Pirate Ship Play Area, Fishermead

What would YOU like here?

Campbell Park Parish Council has been awarded a grant from Milton Keynes Council, to be used alongside Parish funds, to carry out further improvements to the Pirate Ship Play Area in 2021.

Earlier this year, Phase 1 of the play area refurbishment was completed with the re-painting of the Pirate Ship, replacement swing seats and the installation of a new trampoline and multi-play unit, providing a much enhanced offer aimed at 5-12 year olds.

The next phase of the project will focus on the planted area adjacent to the play area. This area was originally developed some years ago as a sensory garden but is now overgrown, untidy with uneven paving and is no longer used for its intended purpose. Instead, this area now attracts anti-social behaviour. This area would appear to serve no valuable purpose in its current state.



We are keen to hear your views on what you would like to happen to this area

Please keep in mind we have a limited budget!

***To contribute to this consultation, please visit our website
www.campbell-park.gov.uk, alternatively you may complete the slip below and
post it to us or email your comments to admin@campbell-park.gov.uk***

Our Suggestion....

We think the current play equipment doesn't cater for the under 5's age group very well. We would like to clear the overgrown area and create a fenced play area designed specifically for the Under 5's with some seating.

Do you agree with this? Yes or No

Please tell us your ideas and suggestions:

Name:

Email:

Address:

Please return your completed consultation form to Campbell Park Parish Council, 1 Pencarrow Place, Fishermead, Milton Keynes, MK6 2AS or email Admin@campbell-park.gov.uk

"All information supplied will be held by Campbell Park Parish Council and will remain secure and confidential. Your details will only be used for the purpose of this consultation and will not be passed on to any third parties or used for marketing purposes in accordance with the Data Protection Act 2018